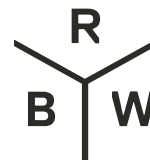


Radiant Disc

Sconces



50 Greene St
New York NY 10013
T +1 212 388 1621
sales@rbw.com



For 2D & 3D drawings of all products, including CAD, Revit and IES files, please visit rbw.com

DESCRIPTION

Diffusing a soft halo of light, Radiant pairs minimalist design with robust LED output and the texture and warmth of solid, sustainably harvested-wood. Custom options for the sconce's simple wooden shade include two shapes, three sizes, and four finishes, allowing for rhythmic color and pattern compositions when installed in groups.

MATERIALS

Ethical sourced solid wood, plastic diffuser, metallic powder coat aluminum base.

PERFORMANCE

433 lm

Power Consumption 8W

Luminaire Watts 8W

54.1 lm/W

95 CRI

LED LIFESPAN

50k hours

CERTIFICATION

UL Listed

Suitable for Damp Locations

IP20

**PRODUCT DIMENSIONS**

Large: 12 in Dia x 4 in Depth | Medium: 10 in Dia x 4 in Depth | Small: 8 in Dia x 4 in Depth

PRODUCT WEIGHT

Large: 3.03 lbs / 1.4 kg | Medium: 2.29 lbs / 1 kg | Small: 1.84 lbs / 0.8 kg

DIMENSIONAL WEIGHT

3 lb

YOUR PRODUCT CODE

RD-DS-M-WF02-PC20-27-277_10_DEX-IP20

Specification Logic

SIZE

Large 12"	L
Medium 10"	M
Small 8"	S

WOOD FINISH

White Oak	WF01
Ebonized Oak	WF02
White	WF04
Tzalam / Caribbean Walnut	WF05

FINISH MODULE

Matte White	PC20
-------------	------

COLOR TEMPERATURE

2700K (warm white)	27
3000K (soft white)	30
3500K (neutral white)	35
4000K (cool white)	40

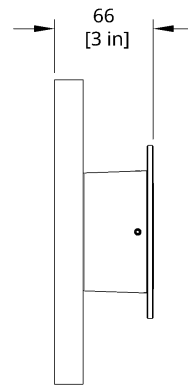
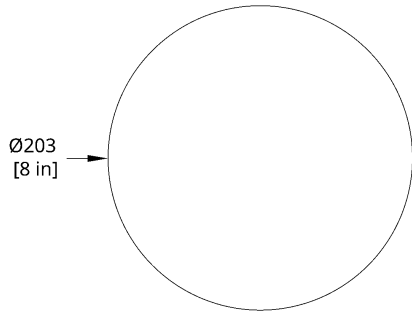
INPUT / CONTROL / POWER

110-120V Input 0-10V, 1% dimming	120_10_DEX
110-120V Input ELV / Reverse Phase, 1% dimming	120_ELV_DEX
110-120V Input TRIAC / Forward Phase, 1% dimming	120_TR_DEX
110-277V Input 0-10V, 1% dimming	277_10_DEX

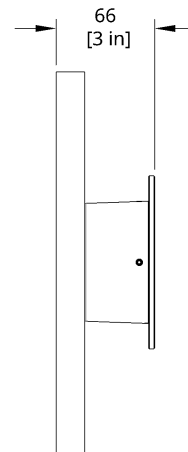
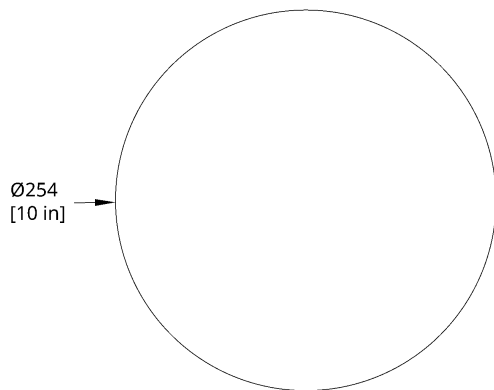
IP 20

IP20

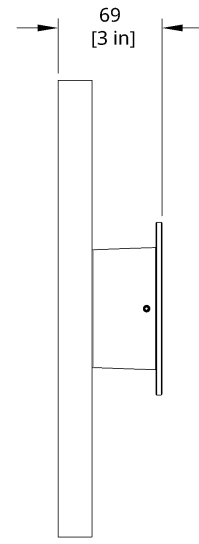
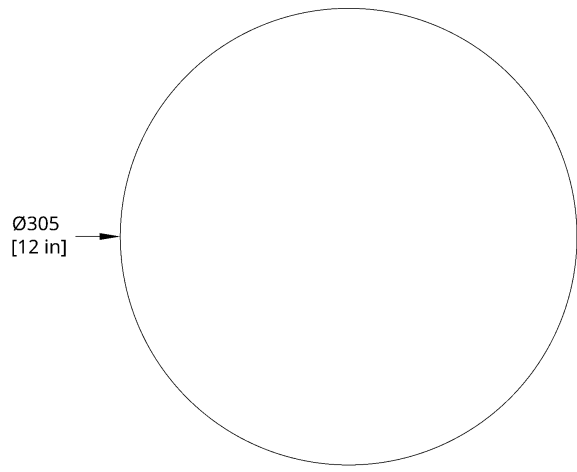
Drawings



RD-DS-S Radiant Disc Small



RD-DS-M Radiant Disc Medium



RD-DS-L Radiant Disc Large