

# Petal

## Petal Stools

2018

Stools



The BassamFellows Petal Chair is the most advanced 3D molded wood veneer chair ever put into commercial production. It takes some of its inspiration from Saarinen's Tulip chair, and also offers a dialogue with the history of the Charles and Ray Eames experiments. The super-shaped wood mimics the unfolding of flower petals, creating a comfortable ergonomic form. The back is wider at its top to provide support, while rolled waterfalls of shaped wood soften the edges. Petal's appeal is accentuated by the visual grain of the wood, which resembles the fine detail on a flower – the lines emanating outwards in the direction of a bloom.

### CB-292M Petal Counter Stool Metal Base

W 17 1/8", 43.4 cm  
D 19 7/8", 50 cm  
H 34 1/2", 87.6 cm  
SH 25", 63.6 cm

### CB-293M Petal Bar Stool Metal Base

W 17 1/8", 43.4 cm  
D 19 7/8", 50 cm  
H 39 1/4", 99.6 cm  
SH 29 3/4", 75.5 cm

*Shell:*  
3D Oak Veneer  
3D Walnut Veneer

*Finish:*  
Ebonized black lacquer  
on Oak. Raw effect lacquer  
on Oak. Natural lacquer on  
Oak or Walnut.

*Base:*  
Tubular steel 4-leg base  
(16mm) and solid steel rod  
footrest (12mm) with smoke  
powder coat finish.

Made in Italy

**Petal**  
Petal Stools

2018

Stools



The BassamFellows Petal Chair is the most advanced 3D molded wood veneer chair ever put into commercial production. It takes some of its inspiration from Saarinen's Tulip chair, and also offers a dialogue with the history of the Charles and Ray Eames experiments. The super-shaped wood mimics the unfolding of flower petals, creating a comfortable ergonomic form. The back is wider at its top to provide support, while rolled waterfalls of shaped wood soften the edges. Petal's appeal is accentuated by the visual grain of the wood, which resembles the fine detail on a flower – the lines emanating outwards in the direction of a bloom.

**CB-292**  
**Petal Counter Stool**

W 17 1/8", 43.4 cm  
D 19 7/8", 50 cm  
H 34 1/2", 87.6 cm  
SH 25", 63.6 cm

**CB-293**  
**Petal Bar Stool**

W 17 1/8", 43.4 cm  
D 19 7/8", 50 cm  
H 39 1/4", 99.6 cm  
SH 29 3/4", 75.5 cm

*Shell:*  
3D Oak Veneer  
3D Walnut Veneer

*Finish:*  
Ebonized black lacquer  
on Oak. Raw effect lacquer  
on Oak. Natural lacquer on  
Oak or Walnut.

*Base:*  
Solid Oak or Solid Walnut.  
Base matches shell wood  
type and finish. Solid  
stainless steel rod footrest.

Made in Italy

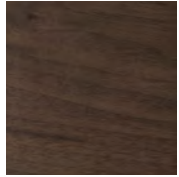
# Wood

BassamFellows  
Wood

Wood



Walnut  
W-NA



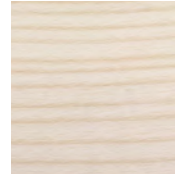
Walnut Black Oil  
W-BO



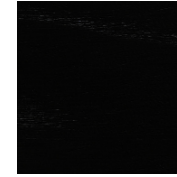
Oak  
O-NA



Oak Raw Effect  
O-RE



White Ash  
A-BL



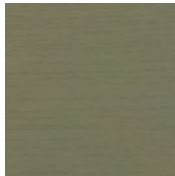
Ebonized Ash  
A-EB



Teak  
T-NA



Iroko  
I-NA



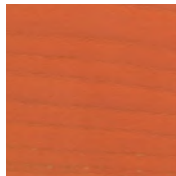
Sage Green Ash  
A-SG



Sun Yellow Ash  
A-SY



Horizon Blue Ash  
A-HB



Mesa Red Ash  
A-MR