

# A P P A R A T U S



TARNISHED SILVER

## TRAPEZE : 5 MOBILE

### REFERENCE

MOLECULAR GEOMETRY  
CAPTURED STATES OF MOTION

### COMPOSITION

SPHERES AND LINE SEGMENTS  
FIXED AND MOVABLE ELEMENTS  
BRASS OR HAND-CAST PORCELAIN BOWLS

A P P A R A T U S

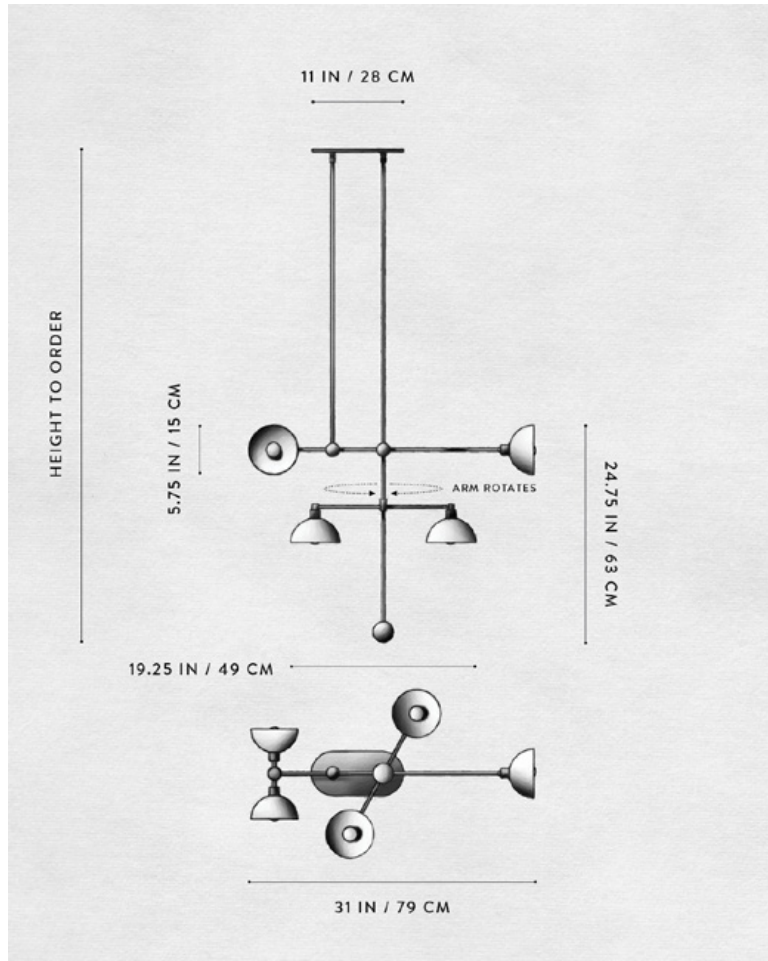


TARNISHED SILVER



AGED BRASS / PORCELAIN

# A P P A R A T U S



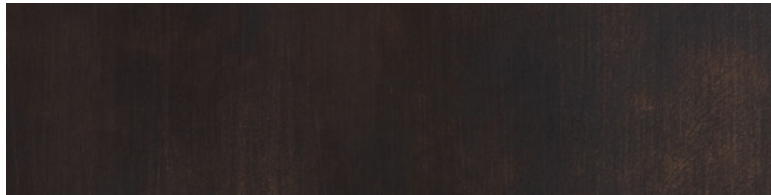
## TRAPEZE : 5 MOBILE

DIMENSIONS	31 W, 11 D IN 79 W, 28 D CM HEIGHT TO ORDER
WEIGHT	APPROX. 15 LBS / 7 KG
PRICE	FROM \$7600 BRASS FROM \$8100 PORCELAIN OR TWO-TONE BOWL TWO-TONE IS AGED BRASS BOWL INTERIOR WITH BLACKENED BRASS BOWL EXTERIOR
MINIMUM HEIGHT INCLUDES	36 IN
ADD HEIGHT	60 IN \$20 / IN
VOLTAGE	120-240 UL / CE
LAMPING	MAX 40W
BULB INCLUDED	5 X 3.8W DIMMABLE LED BULB 220 LUMENS EACH 2500K 120V : E12 SPHERE I : MATTE WHITE 240V : E14 SPHERE I : MATTE WHITE
BULB LIFE	15,000 HOURS
DEPOSIT	50% UPON ORDER
BALANCE	DUE PRIOR TO SHIPPING
LEAD TIME	PLEASE REFER TO WEBSITE
	FINISHED AND ASSEMBLED BY HAND IN NY DOMESTIC AND IMPORTED COMPONENTS

# A P P A R A T U S



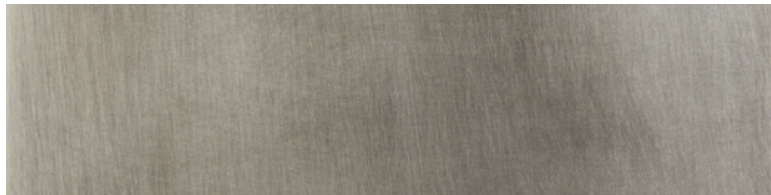
AGED BRASS



OIL-RUBBED BRONZE



BLACKENED BRASS



TARNISHED SILVER

METAL

TRAPEZE

AGED BRASS [WAXED]

OIL-RUBBED BRONZE [WAXED]

BLACKENED BRASS [WAXED]

TARNISHED SILVER [LACQUERED] ADD 35%