

WORKSTEAD



WORKSTEAD



SHADED VAULT
natural linen

WORKSTEAD

SHADED VAULT

hardwired

SHADED VAULT is one in a collection of architectural lightboxes inspired by forms from our iconic ARCHETYPE series. A profile conjuring an arched allée is draped in Natural Linen for a minimalist sculptural moment against a wall. Available with or without a pull chain. UL Listed. Damp Rated.

Shade Options

Natural Linen

Hardware Options

Hewn Brass
Hand Finished Bronze
Brushed Nickel

Dimensions

Overall Height - 18"
Height Including Chain - 24"
Width - 6"
Depth - 6.5"

Weight

8 lbs

Lamp

25 Watt Incandescent Max Per Socket
(2) 5W Dimmable LED Bulbs Included
2" Diameter With Porcelain Finish
40 Watt Equivalent Each
650 Total Lumens
2700K Color Temperature
Bulb Life 30,000 Hours
110/120V, E12
220/240V, E14
UL/CE Listed
Damp Rated

6.5"

6"



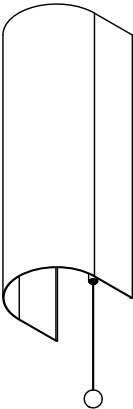
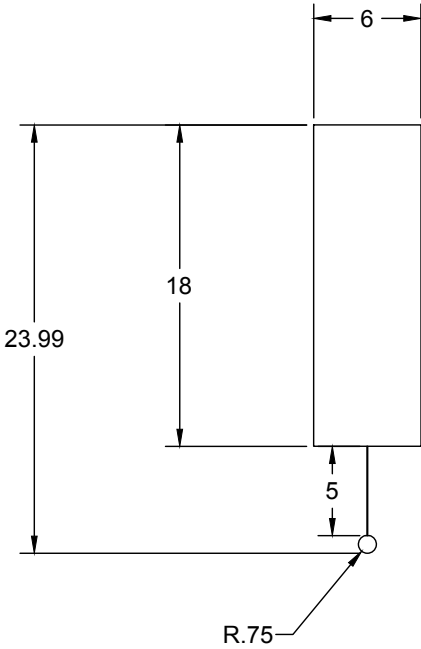
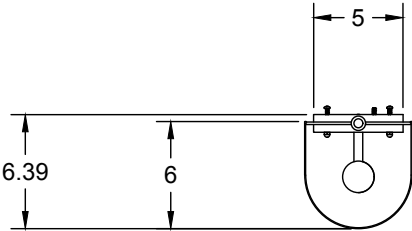
side

18"



front

WORKSTEAD



WORKSTEAD



SHADED BLOCK
natural linen

WORKSTEAD

SHADED BLOCK

hardwired

SHADED BLOCK is one in a collection of architectural lightboxes inspired by forms from our iconic ARCHETYPE series. The structured geometry of a rectangle is draped in Natural Linen for a minimalist sculptural moment against a wall. Available with or without a pull chain. UL Listed. Damp Rated.

Shade Options

Natural Linen

Hardware Options

Hewn Brass
Hand Finished Bronze
Brushed Nickel

Dimensions

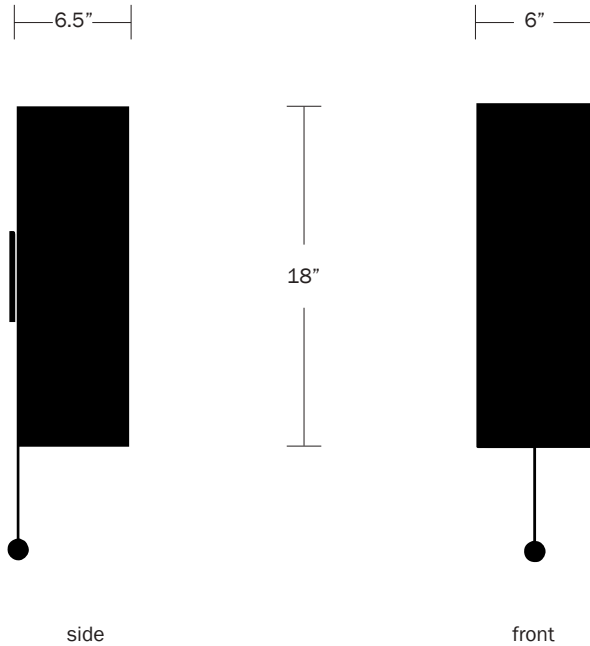
Overall Height - 18"
Height Including Chain - 24"
Width - 6"
Depth - 6.5"

Weight

8 lbs

Lamp

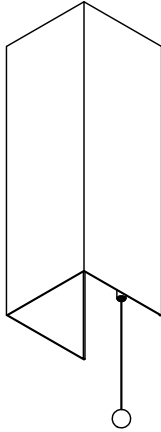
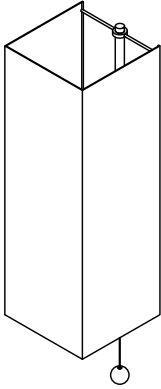
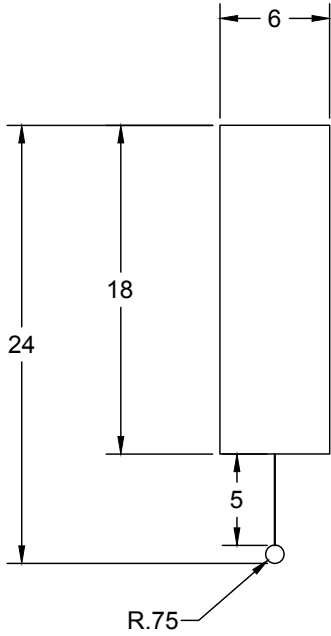
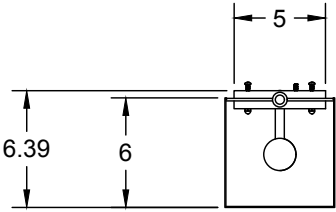
25 Watt Incandescent Max Per Socket
(2) 5W Dimmable LED Bulbs Included
2" Diameter With Porcelain Finish
40 Watt Equivalent Each
650 Total Lumens
2700K Color Temperature
Bulb Life 30,000 Hours
110/120V, E12
220/240V, E14
UL/CE Listed
Damp Rated



side

front

WORKSTEAD



WORKSTEAD



SHADED GABLE
natural linen

WORKSTEAD

SHADED GABLE

hardwired

SHADED GABLE is one in a collection of architectural lightboxes inspired by forms from our iconic ARCHETYPE series. An angular crest is draped in Natural Linen for a minimalist sculptural moment against a wall. Available with or without a pull chain. UL Listed. Damp Rated.

Shade Options

Natural Linen

Hardware Options

Hewn Brass
Hand Finished Bronze
Brushed Nickel

Dimensions

Overall Height - 18"
Height Including Chain - 24"
Width - 6"
Depth - 6.5"

Weight

8 lbs

Lamp

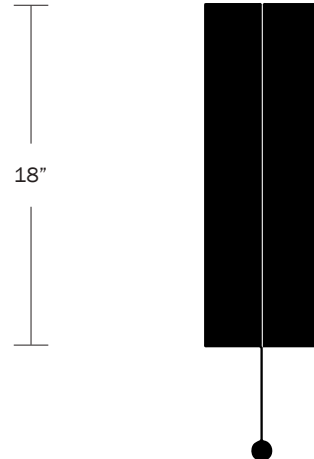
25 Watt Incandescent Max Per Socket
(2) 5W Dimmable LED Bulbs Included
2" Diameter With Porcelain Finish
40 Watt Equivalent Each
650 Total Lumens
2700K Color Temperature
Bulb Life 30,000 Hours
110/120V, E12
220/240V, E14
UL/CE Listed
Damp Rated

6.5"



side

6"



front

WORKSTEAD

