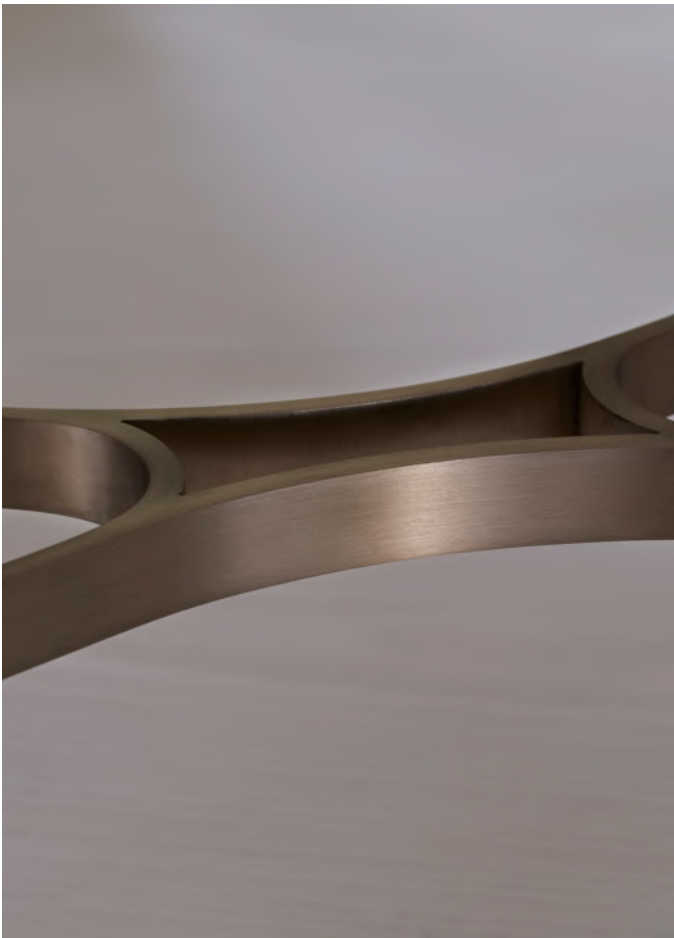


STITES RECTANGULAR COCKTAIL TABLE



## STITES RECTANGULAR COCKTAIL TABLE

MODEL NO: 10090201

Hand cast, clear glass crystal table top with constellation inspired bubble pattern top on satin pale bronze metal base with hand turned wood legs.

### AS SHOWN (IN PHOTO)

Metal - satin pale bronze

Wood - dark walnut

### DIMENSIONS

Overall - 65"W x 31"D x 16.5"H

### AVAILABLE FINISHES

Glass - hand poured, clear glass crystal with constellation inspired bubble pattern

Metal - satin pale bronze

Wood - white ash, medium walnut, ebonized ash

### ADDITIONAL NOTES

General lead time for standard finishes is 12-14 weeks. Updated lead times provided at time of formal quoting.

