



GABRIEL SCOTT

EST. 2012



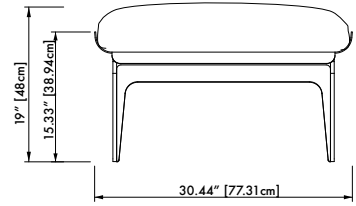
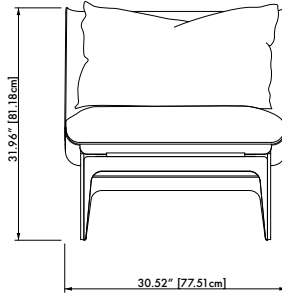
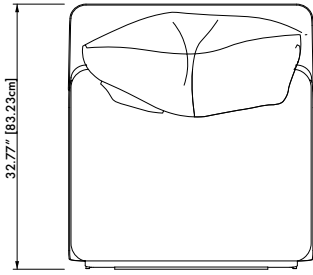
BOUDOIR
Chair & Ottoman

in Blackened Steel,
Satin Brass & Julia Nude

A classic seating silhouette reinterpreted, Gabriel Scott plays with rounded metal lines and layering effects to create the Boudoir series. A pebbled vegan leather lining hosts a plush tone-on-tone fabric cushion sitting on top of the curved metal shell fusing solid with soft.

The Boudoir makes lounging an elegant experience by instilling depth and movement into each piece. With brass hardware embellishments, the Boudoir is available as a daybed, chaise longue, loveseat or chair with ottoman. Various metal and leather colors available. COM & COL options available.

All Gabriel Scott pieces are handmade in Canada.



SPECIFICATIONS

Standard Finishes:

Metal: Blackened Steel, Satin Nickel,
Satin Brass or Satin Copper

Leather & Fabric: Black, Navy, Gray or Nude finishes

Specifications:

Chair Dimensions: 32.77" x 30.52" x 31.96" H

83 cm x 78 cm x 81 cm H

Weight: 110 lbs / 50 kg

Ottoman Dimensions: 24" x 30.44" x 19" H

61 cm x 77 cm x 48 cm H

Weight: 70.4 lbs / 32 kg

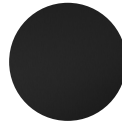
Standard lead time: 12 - 14 weeks

Custom finishes available upon inquiry.

Made and assembled in Canada.

STANDARD FINISHES

Metal:



Blackened Steel -
Base/ Hardware



Satin Nickel -
Hardware

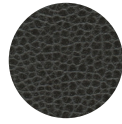


Satin Brass -
Hardware

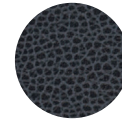


Satin Copper -
Hardware

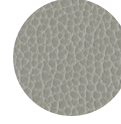
Vegan Leather:



Black - Pebbled
Vegan Leather



Navy - Pebbled
Vegan Leather



Gray - Pebbled
Vegan Leather

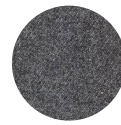


Nude - Pebbled
Vegan Leather

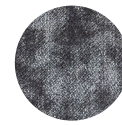
Fabric Upholstery:



Everglades - Navy



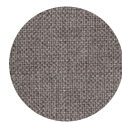
Redhills - Navy



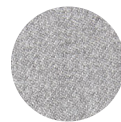
Cumulus - Navy



Sophie - Navy



Nubia - Gray



Redhills - Gray



Julia - Gray



Sophie - Gray



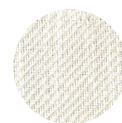
Nubia - Nude



Cumulus - Nude



Julia - Nude



Share - Nude