

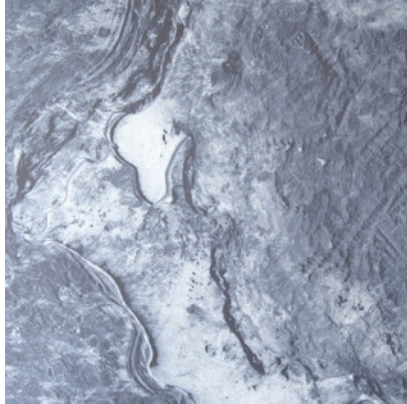
Calico

TERRA

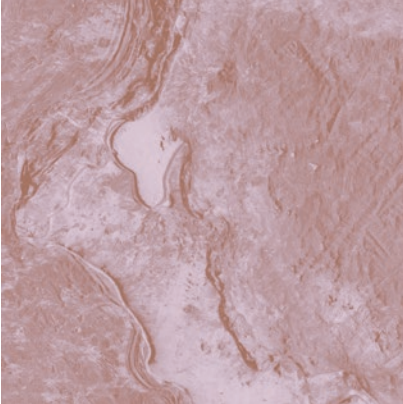
Tear Sheet



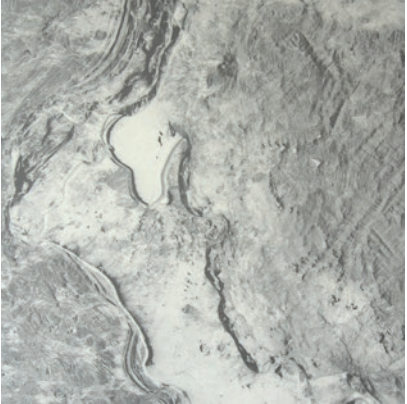
Terra is inspired by the metaphysical qualities of lead.



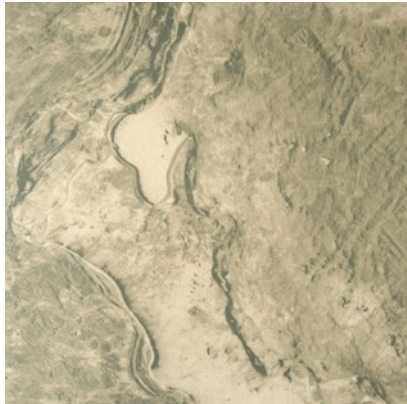
AETHER



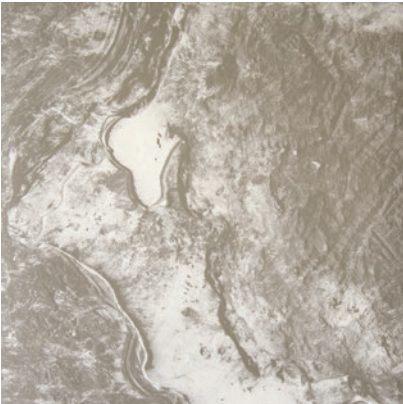
ASTRA



COMET



MATTER



NITRE

Terra

Colorways: Aether, Astra, Comet, Matter, Nitre

Specifications | Commercial Substrate

Suitable for residential and commercial projects

DETAILS

Printed in panels to fit your specific space

Printed to order

Pricing available upon request

Sold by the square foot

Lead time averages 8 weeks

Rush options and custom colors available

Printed in USA

SPECS

Type II commercial-grade PVC-free substrate

Polyester/natural fiber face with fabric backing

Non-repeating mural

Panels trim to 52" wide, including overlap

14 oz per linear yard (435.2 g per linear meter)

Smooth surface texture

INSTALLATION

Professional install recommended

Wallpaper comes untrimmed

TESTING

(US) ASTM E 84 class A fire rating

CCC-W-408D type II

W-101 type II class A

ASTM E96 Procedure B - 66 Perms

ENVIRONMENTAL

Low VOC per California CHPS 01350 air quality

Contains 31% post-consumer recycled content

LEED credits eligible

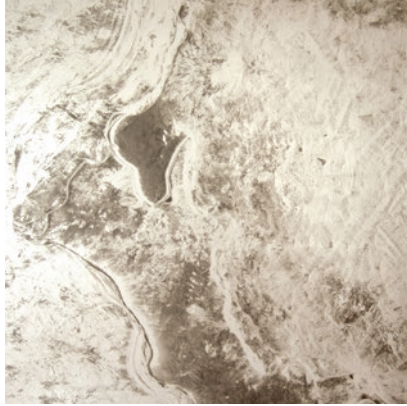
Formaldehyde, heavy metal and lead free

PVC & POA Free

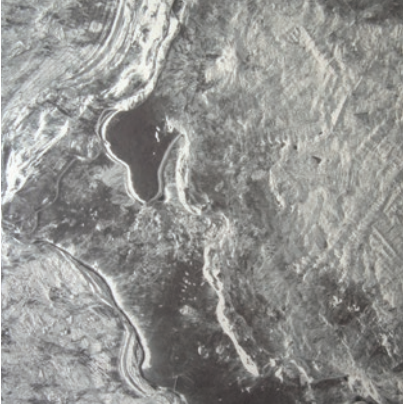
CARE

Clean with damp cloth

Terra is inspired by the metaphysical qualities of lead.



ALUM



ELEMENT

Terra

Colorways: Alum, Element

Specifications | Commercial Substrate

Suitable for residential and commercial projects

DETAILS

Printed in panels to fit your specific space

Printed to order

Pricing available upon request

Sold by the square foot

Lead time averages 8 weeks

Rush options and custom colors available

Printed in USA

SPECS

Type II commercial-grade vinyl substrate

Non-woven backing

Non-repeating mural

Panels trim to 52" wide, including overlap

20 oz per linear yard (620 g per linear meter)

Smooth metallic surface

INSTALLATION

Professional install recommended

Wallpaper comes untrimmed

TESTING

(US) ASTM E 84 class A fire rating

(EU) EN 15102 class B, s2

(CN) CAN/ULC-S102.2 class A

CCC-W-408D type II

WA specification W-101 type II

NFPA 286 corner burn test class A

Passes ASTM G21 mold & mildew

ENVIRONMENTAL

Low VOC per California CHPS 01350 air quality

Cadmium and lead free formulation

LEED credits eligible

CARE

Clean with damp cloth