

## Wood Frame Lounge

### Wood Frame Lounge Chairs

2005

Lounge Chairs



“Living in a glass house makes you design pieces to look immaculate from every angle,” says Craig Bassam, who designed the BassamFellows Wood Frame Lounge Collection for his own home. Despite being conceived ‘in the round,’ the lounges are infinitely adaptable pieces, appearing as chic in downtown Manhattan lofts as they do in Connecticut modernist homes. This versatility is the result of the lounge’s rigorously conceived form, which deconstructs the bulkiness of traditional lounge seating. As such, the form is reduced to its essence — an exposed structural wood frame elevated to fine cabinetry and a system of thin, layered cushions for ultimate comfort. Within its minimal profile are seat and back cushions comprised of a variable density foam core surrounded by plush down and feather pillows that are hand sewn, tufted and welted. Lumbar and bolster cushions are comprised of down and feather fill.

#### CB-50 Low Back Lounge Chair

W 29 1/2", 75 cm  
D 33 1/2", 85 cm  
H 28 1/2", 72.4 cm  
SH 16", 40.6 cm  
AH 20", 50.8 cm

#### CB-510 High Back Lounge Chair

W 29 1/2", 75 cm  
D 33 1/2", 85 cm  
H 37 1/2", 95.2 cm  
SH 16", 40.6 cm  
AH 20", 50.8 cm

#### CB-51 Wing Back Lounge Chair

W 29 1/2", 75 cm  
D 33 1/2", 85 cm  
H 42", 106.7 cm  
SH 16", 40.6 cm  
AH 20", 50.8 cm

#### CB-511 Ottoman

W 23 1/4", 59 cm  
D 20", 50.8 cm  
H 12", 30.5 cm

*Wood:*  
Solid Ash  
Solid Oak  
Solid Walnut

*Finish:*  
Ebonized black lacquer on Ash or bleached, white pigment, matte acrylic on Ash. Raw effect lacquer on Oak. Hand rubbed natural oil on Oak or Walnut, or hand rubbed black oil on Walnut.

*Upholstery:*  
Seat and back cushions comprised of variable density foam surrounded by feather and down. Lumbar and bolster cushions comprised of feather and down and feature hand sewn leather lacing details

Made in Italy

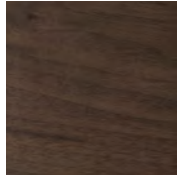
# Wood

BassamFellows  
Wood

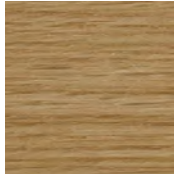
Wood



Walnut  
W-NA



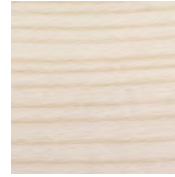
Walnut Black Oil  
W-BO



Oak  
O-NA



Oak Raw Effect  
O-RE



White Ash  
A-BL



Ebonized Ash  
A-EB



Teak  
T-NA



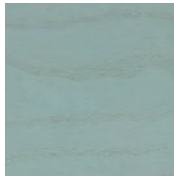
Iroko  
I-NA



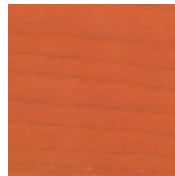
Sage Green Ash  
A-SG



Sun Yellow Ash  
A-SY



Horizon Blue Ash  
A-HB



Mesa Red Ash  
A-MR

# Elegant

BassamFellows  
Leather

Leather



95947 Oxblood



11038 Platinum  
Gray



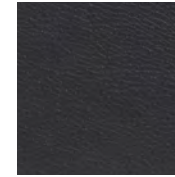
43024 Camel



43807 British Tan



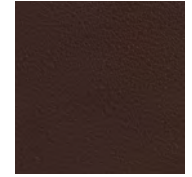
48027 Olive



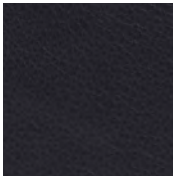
91059 Anthracite



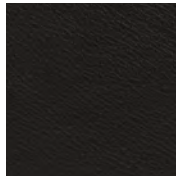
93718 Dark Cognac



93957 Dark Brown



97026 Dark Navy



99001 Black

Elegant grain leather is aniline-dyed with a batique-effect that displays the natural character of the original Scandinavian cattle hide.

Additional colors available. Minimum and upcharge may apply.

## Raw Material

Grain leather from  
Scandinavian cattle

## Thickness

1.0 – 1.2mm

## Finish

Pure aniline leather

## Lightfastness

3

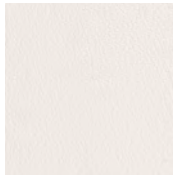
## Price Grade

A

# Coach

Leather

BassamFellows  
Leather



00118 Milk



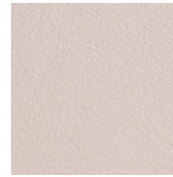
11073 Pale Gray



11049 Medium Gray



13048 Elephant



01061 Gray Beige



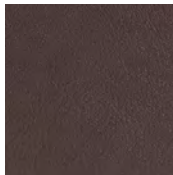
13072 Taupe



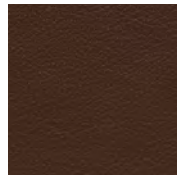
02119 Camel



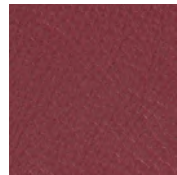
33004 British Tan



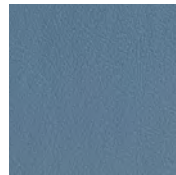
93129 Dark  
Chocolate



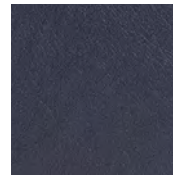
93109 Topaz Brown



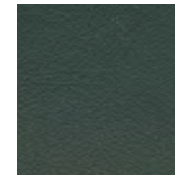
35126 Oxblood



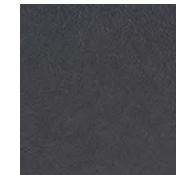
17027 Cadet Blue



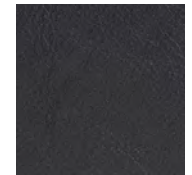
77127 Dark Navy



98015 Dark Green



91102 Anthracite



99999 Black

Coach is a chrome free, soft and pliable semi-aniline leather that offers outstanding comfort combined with excellent durability and is suitable for public environments.

Additional colors available. Minimum and upcharge may apply.

#### Raw Material

Grain leather from Scandinavian cattle

#### Thickness

1.1 - 1.3mm

#### Finish

Semi-Aniline leather

#### Lightfastness

6

#### Price Grade

A

## Comfort

BassamFellows  
Leather

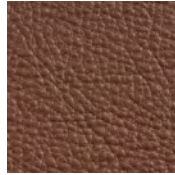
Leather



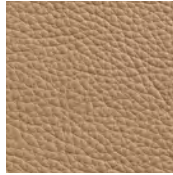
02067 Beige



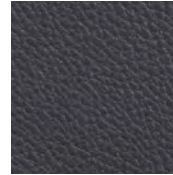
12114 Gray Beige



33286 Chestnut  
Brown



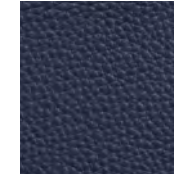
43632 Camel



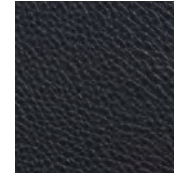
91089 Anthracite



93287 Chocolate



97054 Navy



99991 Black

---

Like the name suggests, Comfort is a soft aniline leather that showcases a varied grain and the distinct features of the natural hide.

Additional colors available. Minimum and upcharge may apply.

### Raw Material

Grain leather from  
Scandinavian cattle

### Thickness

1.3 - 1.5mm

### Finish

Pure aniline leather

### Lightfastness

3

### Price Grade

B

# Kalista

BassamFellows  
for Geiger Textiles

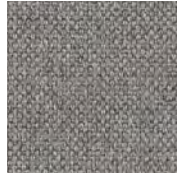
Textiles



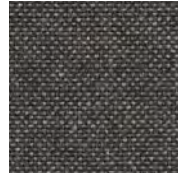
1AL02 Natural



1AL03 Titanium



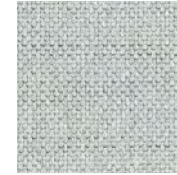
1AL04 Pewter



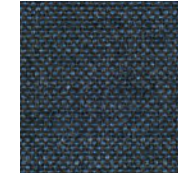
1AL05 Starry Night



1AL08 Dune



1AL10 Bluestone



1AL12 Night Sky

Woven using recycled cotton from the apparel industry, Kalista is a plain weave using space-dyed yarns to create a slightly varied, striated appearance in this classic fabric.

Additional colors available. Minimum and upcharge may apply.

## Content

71% Post-Industrial Recycled Cotton,  
18% Post-Industrial Recycled Polyester,  
11% Polyester

## Width

54"

## Finish

PFOA-Free  
Stain Resistant

## Abrasion

90,000 Double Rubs,  
Wyzenbeek

## Flammability

CA TB 117-2013

## Price Grade

1



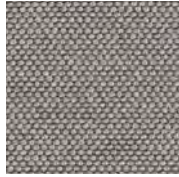
# Saille

BassamFellows  
for Geiger Textiles

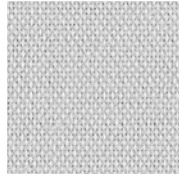
Textiles



18001 Coal



18002 Shale



18003 Haze



18004 Stone



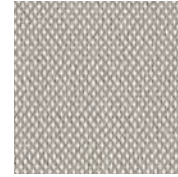
18005 White



18006 Beach



18007 Sand



18010 Fog



18013 Summer Sky



18014 Lake



18015 Midnight Blue

A versatile foundational textile, Saille is a uniform plain weave using two yarn colors to create the effect of a classic canvas sailcloth.

Additional colors available. Minimum and upcharge may apply.

## Content

69% Cotton,  
31% Polyester

## Width

57"

## Finish

PFOA-Free  
Stain Resistant

## Backing

Acrylic

## Abrasion

75,000 Double Rubs,  
Wyzenbeek

## Flammability

CA TB 117-2013

## Price Grade

1





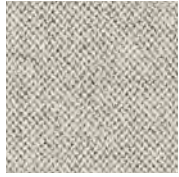
# Bellano

BassamFellows  
for Geiger Textiles

Textiles



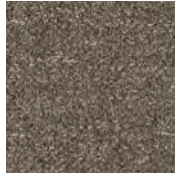
1AX01 Pearl



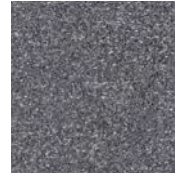
1AX02 Fog



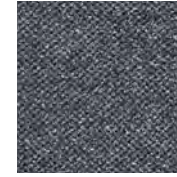
1AX03 Fawn



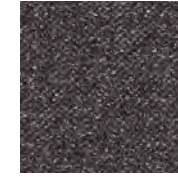
1AX04 Pumice



1AX05 Pewter



1AX06 Atlantic



1AX10 Charcoal



1AX11 Umber

A blending of natural fibers—wool, linen and alpaca—gives Bellano a slight sheen and luxurious texture.

Additional colors available. Minimum and upcharge may apply.

## Content

75% Wool, 10% Linen,  
8% Nylon, 7% Alpaca

## Width

55"

## Abrasion

40,000 Cycles,  
Martindale

## Flammability

CA TB 117-2013

## Price Grade

3





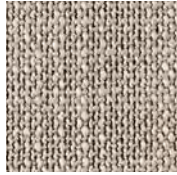
# Capri

BassamFellows  
for Geiger Textiles

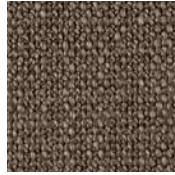
Textiles



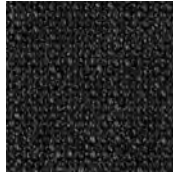
17201 Snow



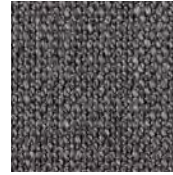
17202 Stone



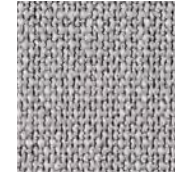
17203 Trench



17204 Graphite



17205 Anthracite



17206 Light Silver

A soft, highly textural fabric, Capri is woven using a combination of irregular heavy yarns and refined, tightly spun cotton yarns, giving it a multidimensional appearance appropriate in any climate.

Additional colors available. Minimum and upcharge may apply.

## Content

36% Cotton, 32% Acrylic,  
24% Rayon, 8% Polyester

## Width

55"

## Finish

PFOA-Free  
Stain Resistant

## Backing

Acrylic

## Abrasion

80,000 Cycles,  
Martindale

## Flammability

CA TB 117-2013

## Price Grade

3



# Milaner

BassamFellows  
for Geiger Textiles

Textiles



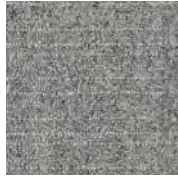
17103 Bark



17104 Deep Navy



17105 Charcoal



17106 Medium Gray



17107 Ash



17108 Crimson

Reminiscent of fine suiting fabric, Milaner uses a mixture of yarns and a mélange of fibers to create a heathered texture with a subtle check.

Additional colors available. Minimum and upcharge may apply.

## Content

56% Wool, 10% Acrylic,  
10% Alpaca, 10% Cotton,  
8% Nylon, 6% Rayon

## Width

55"

## Abrasion

70,000 Cycles,  
Martindale

## Flammability

CA TB 117-2013

## Price Grade

3



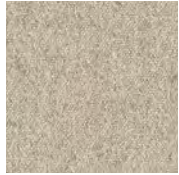
# Panno di Dolce

Textiles

BassamFellows  
for Geiger Textiles



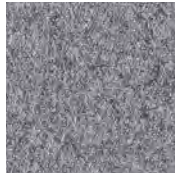
1AV01 Fog



1AV02 Dune



1AV03 Trench



1AV04 Flannel



1AV05 Charcoal



1AV06 Umber



1AV07 Deep Navy



1AV08 Graphite

A classic textile, Panno di Dolce mixes a combination of yarns to achieve a refined heathered wool flannel appearance.

Additional colors available. Minimum and upcharge may apply.

## Content

65% Wool, 20% Nylon,  
15% Alpaca

## Width

55"

## Abrasion

75,000 Cycles,  
Martindale

## Flammability

CA TB 117-2013

## Price Grade

3



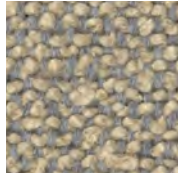
# Pristina

BassamFellows  
for Geiger Textiles

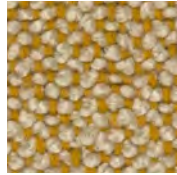
Textiles



1JC01 Dove



1JC02 Goldstone



1JC03 Daybreak



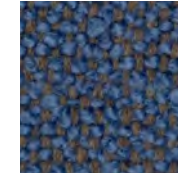
1JC04 Pumice



1JC05 Cappuccino



1JC06 Gunmetal



1JC07 Caspian



1JC08 Café Noir

Pristina is a two-toned classic wool bouclé that takes inspiration from the highly tactile upholstery made famous in mid-century design.

## Content

37% Wool, 25% Viscose,  
17% Acrylic, 15% Cotton,  
6% Polyester

## Width

54"

## Finish

PFOA-Free Stain Resistant

## Abrasion

85,000 Double Rubs,  
Wyzenbeek

## Flammability

CA TB 117-2013

## Price Grade

3



# Resca

BassamFellows  
for Geiger Textiles

Textiles



1AW01 Fog



1AW02 Dune



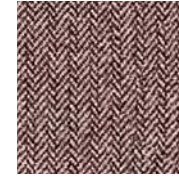
1AW03 Trench



1AW04 Flannel



1AW05 Umber



1AW06 Bordeaux

---

A subtle nod to menswear, Resca uses light and dark woolen yarns to create an updated small-scale asymmetrical herringbone.

## Content

75% Wool, 10% Linen,  
8% Nylon, 7% Alpaca

## Width

56"

## Abrasion

40,000 Cycles,  
Martindale

## Flammability

CA TB 117-2013

## Price Grade

3



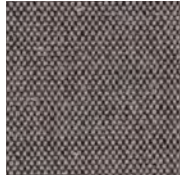
# Wool Tweed

Textiles

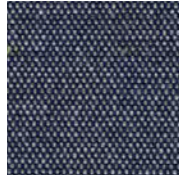
BassamFellows  
for Geiger Textiles



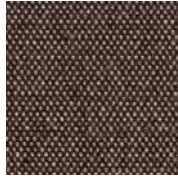
16601 Trench



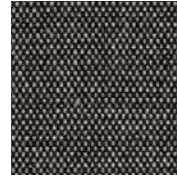
16602 Pewter



16605 Navy



16606 Umber



16607 Charcoal

Made in New Zealand from ultra-soft, locally sourced wool, this multicolored woolen fabric is reminiscent of Donegal tweed, characterized by bright flecks of color randomly woven throughout.

Additional colors available. Minimum and upcharge may apply.

## Content

80% Wool,  
20% Nylon

## Width

54"

## Abrasion

70,000 Cycles,  
Martindale

## Flammability

CA TB 117-2013

## Price Grade

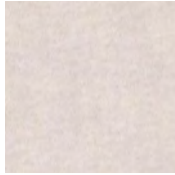
3



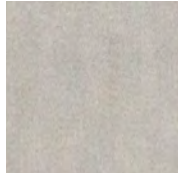
# Allusion

BassamFellows  
for Geiger Textiles

Textiles



1GS01 Moonlight



1GS02 Pearl Gray



1GS03 Platinum



1GS04 Smoky  
Taupe



1GS05 Camel



1GS07 Chestnut  
Brown



1GS11 Sterling



1GS12 Anthracite

An opulent alpaca velvet, Allusion has subtle shade variation in the dense, non-directional pile, featuring a special finish for exceptional wearability.

Additional colors available. Minimum and upcharge may apply.

## Content

60% Alpaca, 27% Wool,  
13% Nylon

## Width

56"

## Backing

Cotton

## Abrasion

95,000 Cycles,  
Martindale

## Flammability

CA TB 117-2013

## Price Grade

5





# Staple

BassamFellows  
for Geiger Textiles

Textiles



16101 Light  
Native Umber



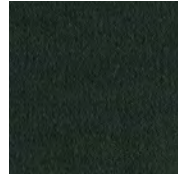
16103 Pearl Gray



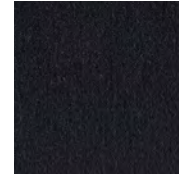
16104 Light Gray



16105 Ferric Gray



16106 Black Green



16107 Prussian Blue



16108 Navy



16110 Chestnut  
Brown



16111 Ruby Red

Staple is classic wool velvet, with a dense, non-directional pile, giving it a matte appearance and high durability.

Additional colors available. Minimum and upcharge may apply.

## Content

100% Wool

## Width

54"

## Backing

Cotton

## Abrasion

250,000 Cycles,  
Martindale

## Flammability

CA TB 117-2013

## Price Grade

5

