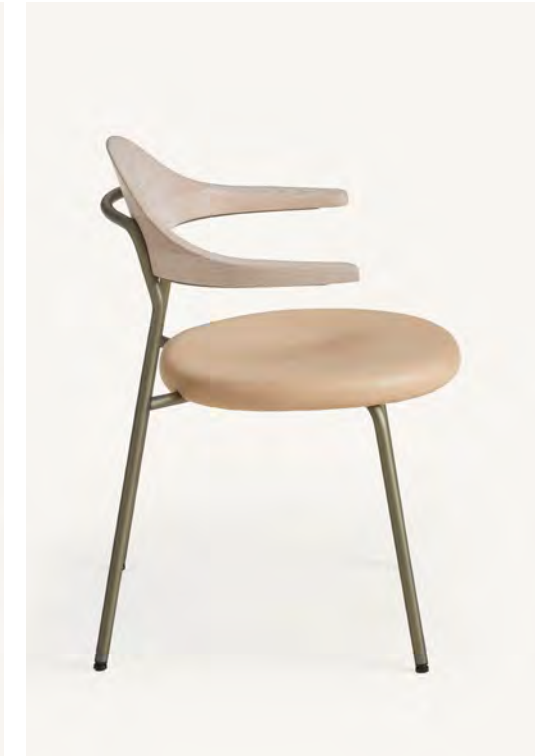


# Bicorn

## Bicorn Chair

2017

Chairs



The Bicorn Chair was the result of an exciting and challenging collaboration with Isay Weinfeld, who invited us to create designs for a landmark dining space in New York City. The chairs had rigorous criteria – they needed to be suitable for outdoor use, they needed to be stackable, and they also needed to be in one of our distinctive, beautiful materials. The chair is light with fully integrated elements. The arms are wholly cantilevered and appear to float unsupported, while the metal frame forms a back loop that can be used as a handle to assist with moving. The backrest and seat are both solid carved wood. There is also an indoor version with a padded, upholstered seat. The name for the chair seemed so obvious to us – when we looked at the finished shape, we immediately saw Napoleon's iconic maritime millinery.

### CB-59 Bicorn Chair

W 25 7/8", 65.6 cm  
D 22 3/8", 56.9 cm  
H 30 1/2", 77.5 cm  
SH 18", 45.6 cm  
AH 25 1/2", 64.9 cm

### CB-59U Bicorn Chair Upholstered

W 25 7/8", 65.6 cm  
D 22 3/8", 56.9 cm  
H 30 1/2", 77.5 cm  
SH 18", 45.6 cm  
AH 25 1/2", 64.9 cm

*Wood:*  
Solid Ash  
Solid Oak  
Solid Iroko  
Solid Walnut

*Finish:*  
Ebonized black lacquer on Ash or bleached, white pigment, matte acrylic on Ash. Raw effect lacquer on Oak. Hand rubbed outdoor oil on Iroko. Hand rubbed natural oil on Oak or Walnut, or hand rubbed black oil on Walnut.

*Base:*  
Tubular stainless steel or tubular stainless steel with smoke powder coat finish, or satin nickel, satin brass, bronze, gunmetal, or custom metal nanoceramic coated tubular stainless steel.

*Upholstery:*  
Dense foam over carved wood seat.

Stacks to four chairs high.

Made in Italy

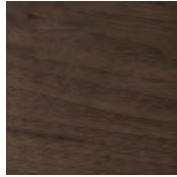
# Wood

BassamFellows  
Wood

Wood



Walnut  
W-NA



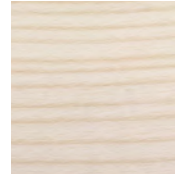
Walnut Black Oil  
W-BO



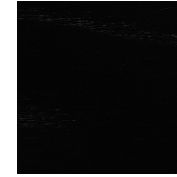
Oak  
O-NA



Oak Raw Effect  
O-RE



White Ash  
A-BL



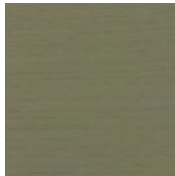
Ebonized Ash  
A-EB



Teak  
T-NA



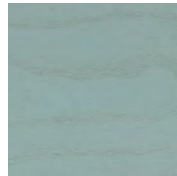
Iroko  
I-NA



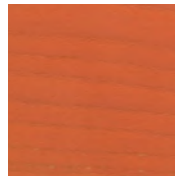
Sage Green Ash  
A-SG



Sun Yellow Ash  
A-SY



Horizon Blue Ash  
A-HB



Mesa Red Ash  
A-MR

# Metal

BassamFellows  
Metal

Metal



Matte Black  
BP



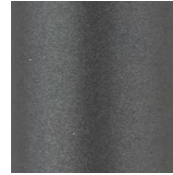
Satin Nickel  
SN



Satin Brass  
SB



Bronze  
BZ



Gunmetal  
GM

---

Nanoceramic coated steel is a more durable and environmentally improved alternative to traditional metal plating where nano particles of metal are mixed with resin and sprayed onto the metal surface versus being placed in a chemical bath.

Additional colors available. Minimum and upcharge may apply.

## Matte Black

Powder coated steel

## Satin Nickel

Nanoceramic coated steel

## Satin Brass

Nanoceramic coated steel

## Bronze

Nanoceramic coated steel

## Gunmetal

Nanoceramic coated steel