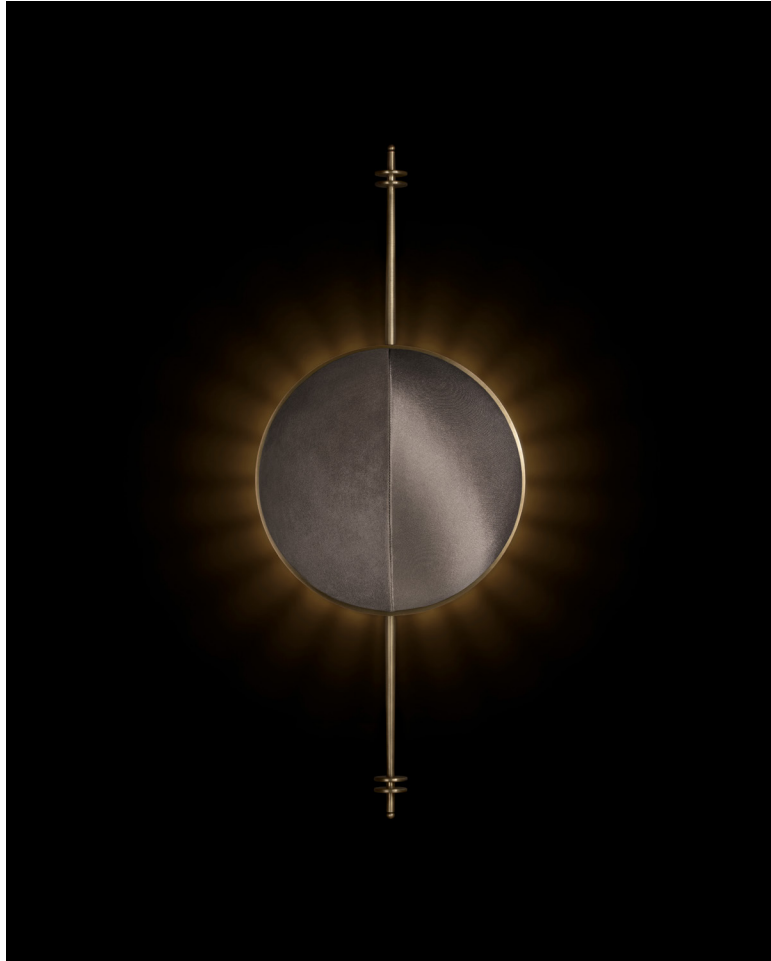


A P P A R A T U S



AGED BRASS / PEWTER SUEDE AND SATIN

STARLET : SCONCE

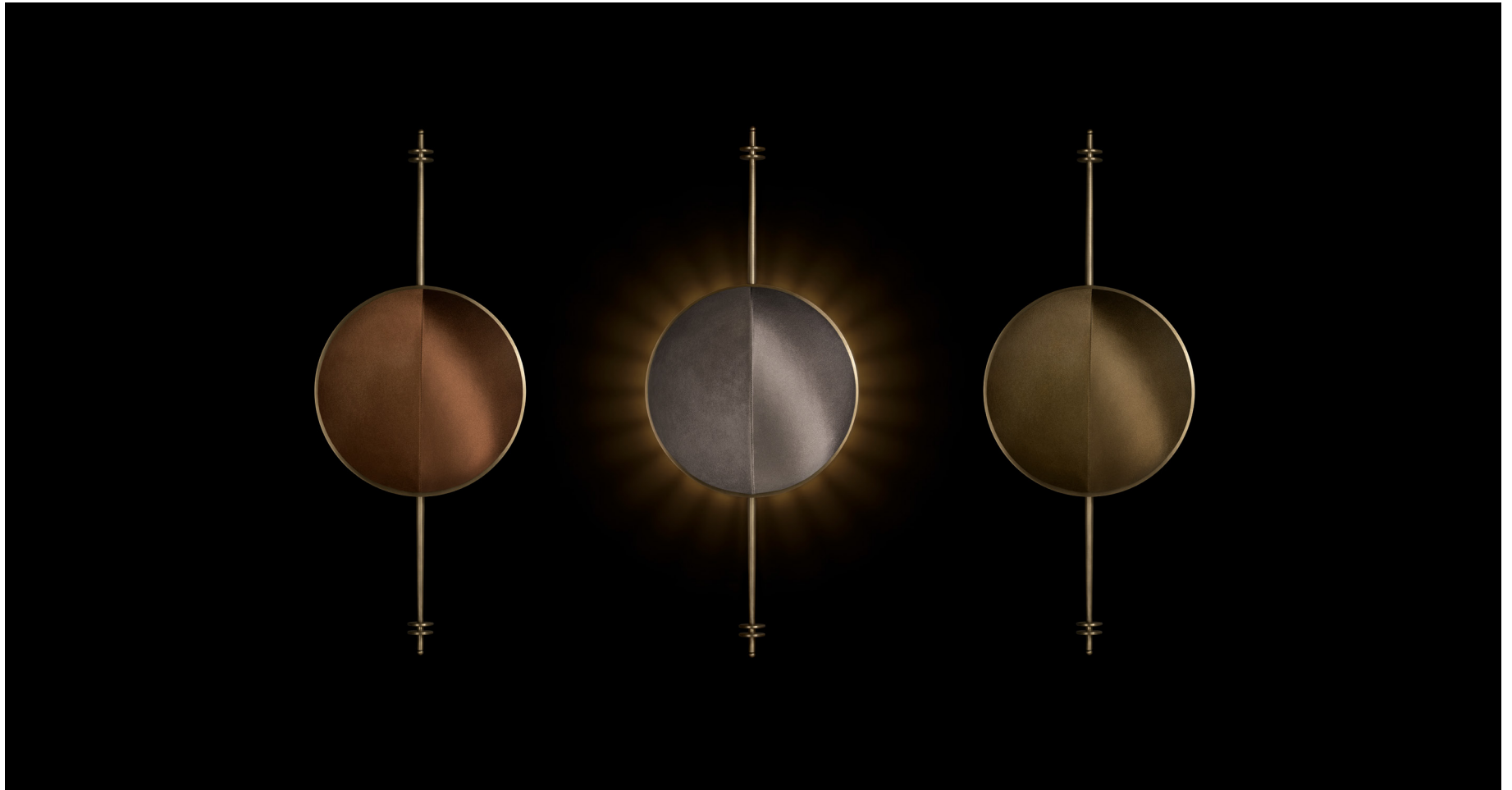
REFERENCE

ANTENNAE
VERDURA 1960

COMPOSITION

BRASS ARMATURE
TONAL SUEDE AND SATIN SHADE

A P P A R A T U S



TARNISHED SILVER / SEPIA SUEDE AND SATIN

AGED BRASS / PEWTER SUEDE AND SATIN

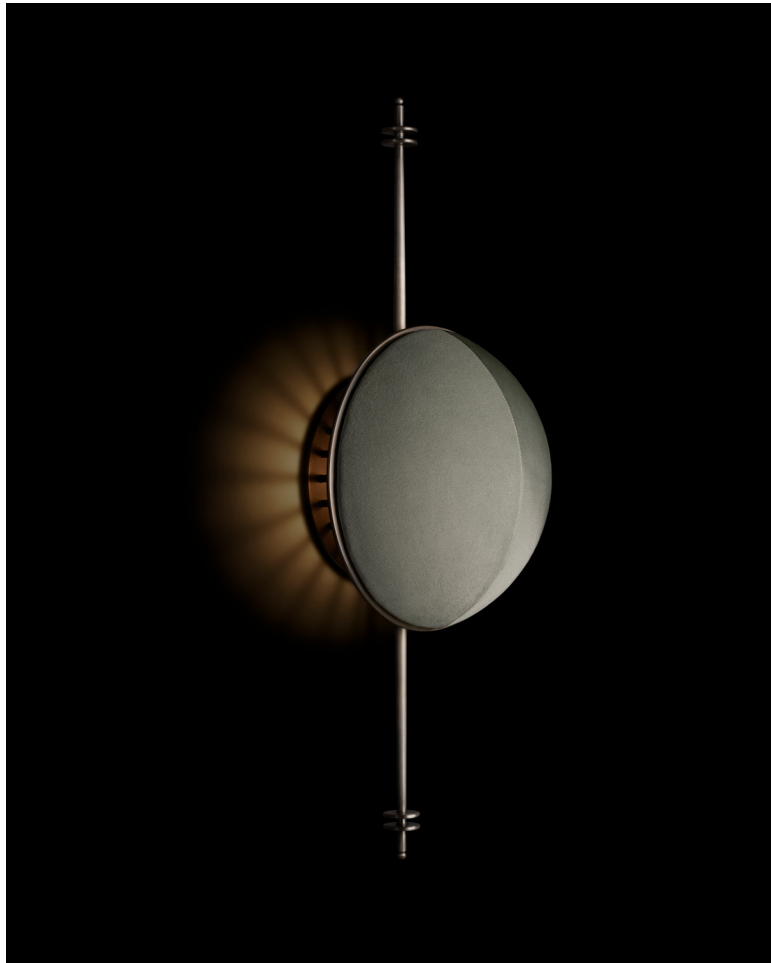
AGED BRASS / BRONZE SUEDE AND SATIN

A P P A R A T U S



AGED BRASS / SEPIA SUEDE AND SATIN

A P P A R A T U S



TARNISHED SILVER / ICE SUEDE AND SATIN



AGED BRASS / SEPIA SUEDE AND SATIN

A P P A R A T U S

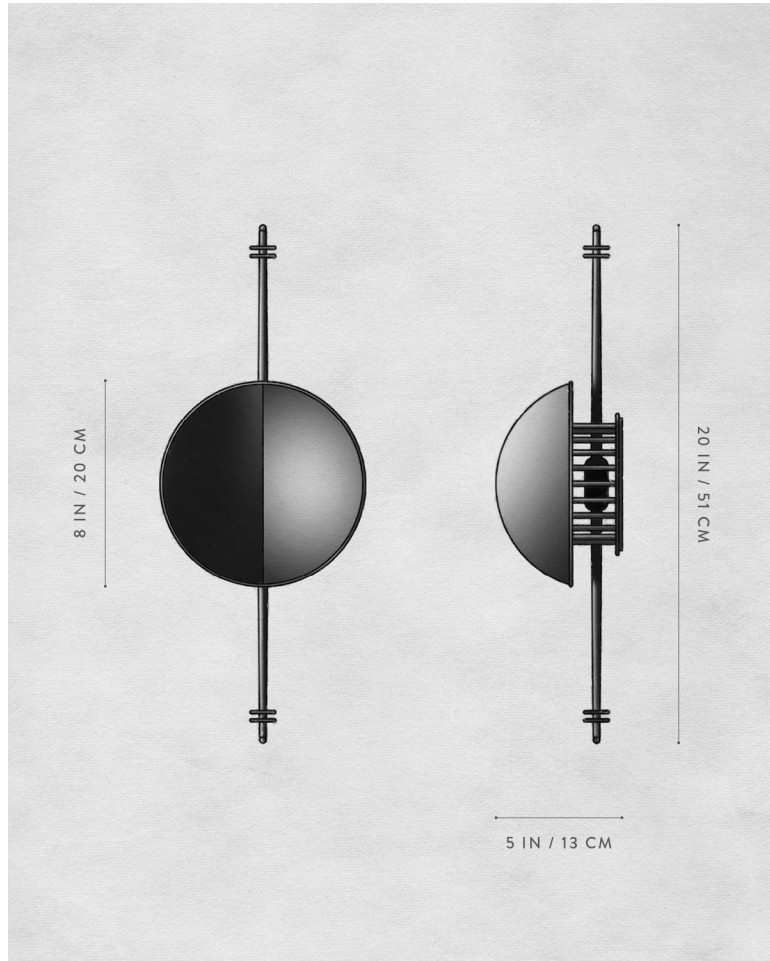


TARNISHED SILVER / JUNIPER SUEDE AND SATIN



TARNISHED SILVER / JUNIPER SUEDE AND SATIN

A P P A R A T U S



STARLET : SCONCE

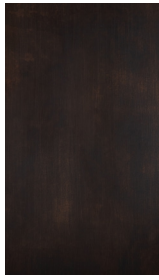
DIMENSIONS	20 H, 8 W, 5 D IN 51 H, 20 W, 13 D CM
WEIGHT	APPROX. 7 LBS / 3 KG
PRICE	FROM \$5500
VOLTAGE	120-240 ETL / CB / CE / UKCA
LAMPING	MAX 7W 2200-2700K WARM DIM
BULB INCLUDED	120V : GU10, 4W 240V : GU10, 5.5W
DEPOSIT	50% UPON ORDER
BALANCE	DUE PRIOR TO SHIPPING
LEAD TIME	PLEASE REFER TO WEBSITE

FINISHED AND ASSEMBLED BY HAND IN NY
DOMESTIC AND IMPORTED COMPONENTS

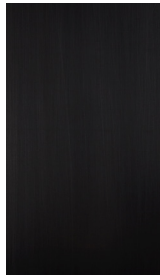
A P P A R A T U S



AGED BRASS



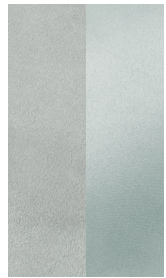
OIL-RUBBED BRONZE



BLACKENED BRASS



TARNISHED SILVER



ICE



PEWTER



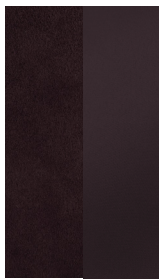
BRONZE



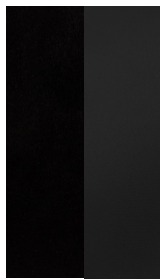
SEPIA



JUNIPER



PLUM



BLACK

METAL

STARLET : SCONCE

AGED BRASS [WAXED]
OIL-RUBBED BRONZE [WAXED]
BLACKENED BRASS [WAXED]
TARNISHED SILVER [LACQUERED] ADD 35%

SUEDE / SATIN

ICE
PEWTER
BRONZE
SEPIA
JUNIPER
PLUM
BLACK