

# A P P A R A T U S



AGED BRASS / BRONZE SUEDE

## METRONOME : FLOOR LAMP

### REFERENCE

STRAVINSKY  
COUNTERPOINT  
VILLA MULLER

### COMPOSITION

HAND-WRAPPED LEATHER OR SUEDE BASE  
BRASS ARMATURE AND SHADE

A P P A R A T U S

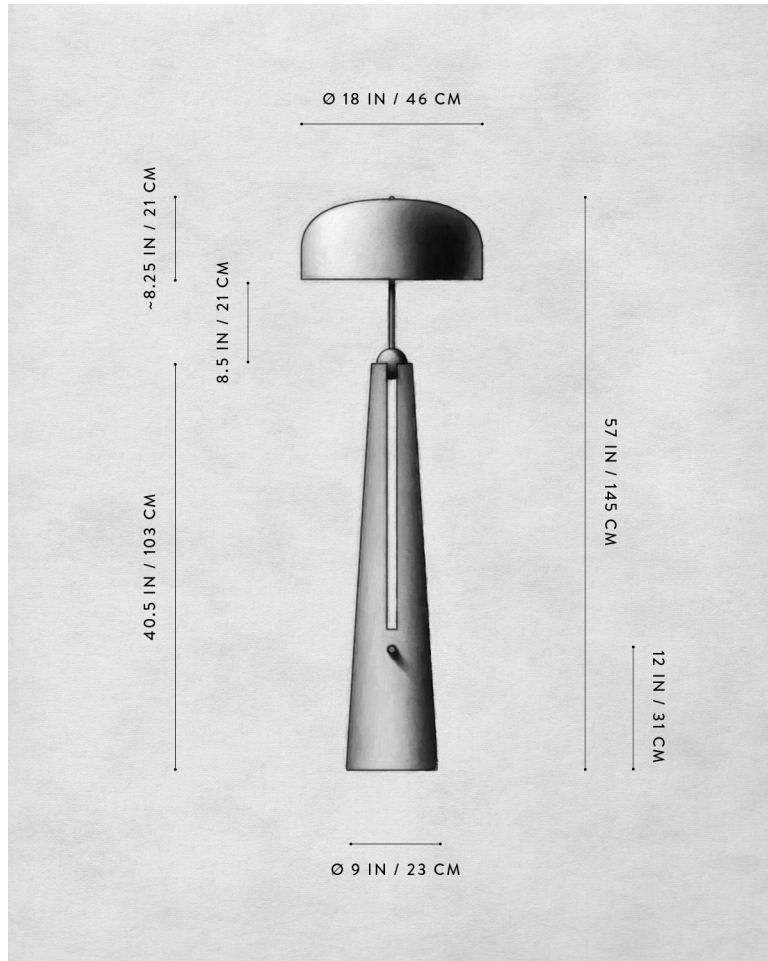


AGED BRASS / BRONZE SUEDE



AGED BRASS / PEWTER SUEDE

# A P P A R A T U S



## METRONOME : FLOOR LAMP

### DIMENSIONS

57 H, Ø 18 IN  
145 H, Ø 46 CM

### PRICE

FROM \$10000

### VOLTAGE

120-240  
UL

### LAMPING BULB INCLUDED

MAX 40W  
2 X 5W DIMMABLE LED BULB  
300 LUMENS  
2500K

### BULB LIFE

120V : E12 GLOBE SM : MATTE WHITE BRT  
240V : E14 GLOBE SM: MATTE WHITE BRT  
30,000 HOURS

### DEPOSIT BALANCE LEAD TIME

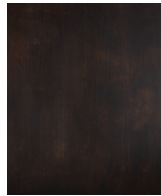
50% UPON ORDER  
DUE PRIOR TO SHIPPING  
PLEASE REFER TO WEBSITE

FINISHED AND ASSEMBLED BY HAND IN NY  
DOMESTIC AND IMPORTED COMPONENTS

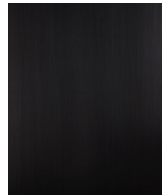
# A P P A R A T U S



AGED BRASS



OIL-RUBBED BRONZE



BLACKENED BRASS



TARNISHED SILVER



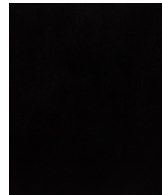
LEATHER - CANE



LEATHER - SADDLE



LEATHER - TAUPE



LEATHER - BLACK



SUEDE - ICE



SUEDE - PEWTER



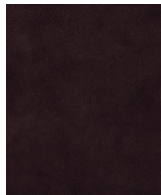
SUEDE - BRONZE



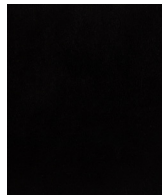
SUEDE - SEPIA



SUEDE - JUNIPER



SUEDE - PLUM



SUEDE - BLACK

METAL

LEATHER

SUEDE

METRONOME : FLOOR LAMP

AGED BRASS [WAXED]  
 OIL-RUBBED BRONZE [WAXED]  
 BLACKENED BRASS [WAXED]  
 TARNISHED SILVER [LACQUERED] ADD 35%

CANE  
 SADDLE  
 TAUPE  
 BLACK

ICE  
 PEWTER  
 BRONZE  
 SEPIA  
 JUNIPER  
 PLUM  
 BLACK