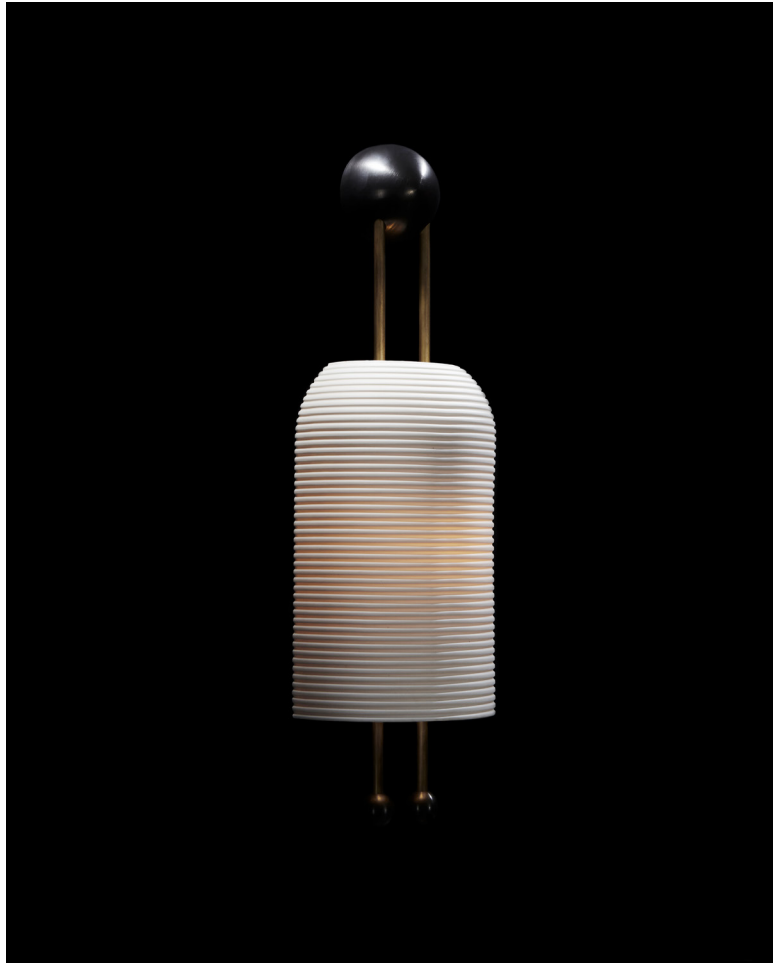


A P P A R A T U S



TWO TONE | AGED BRASS / BLACKENED BRASS

LANTERN : SCONCE

REFERENCE

FRITZ LANG'S METROPOLIS
CHÔCHIN
WIENER WERKSTATTE

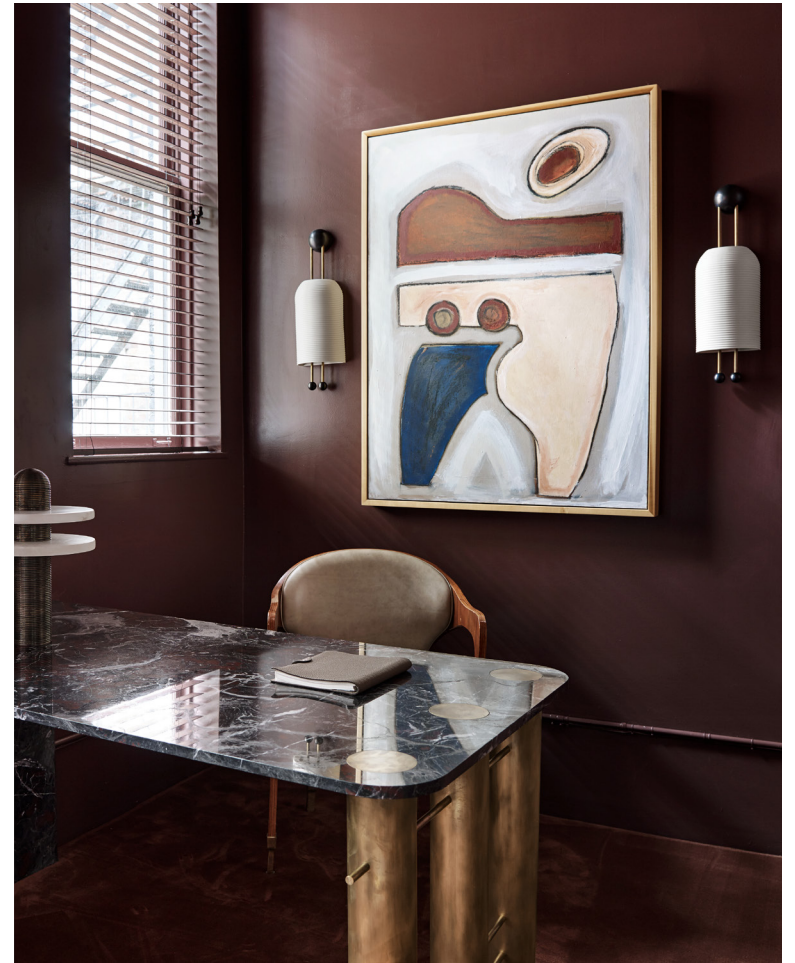
COMPOSITION

SLIP-CAST, FLUTED PORCELAIN SHADE
BRASS ARMATURE

A P P A R A T U S

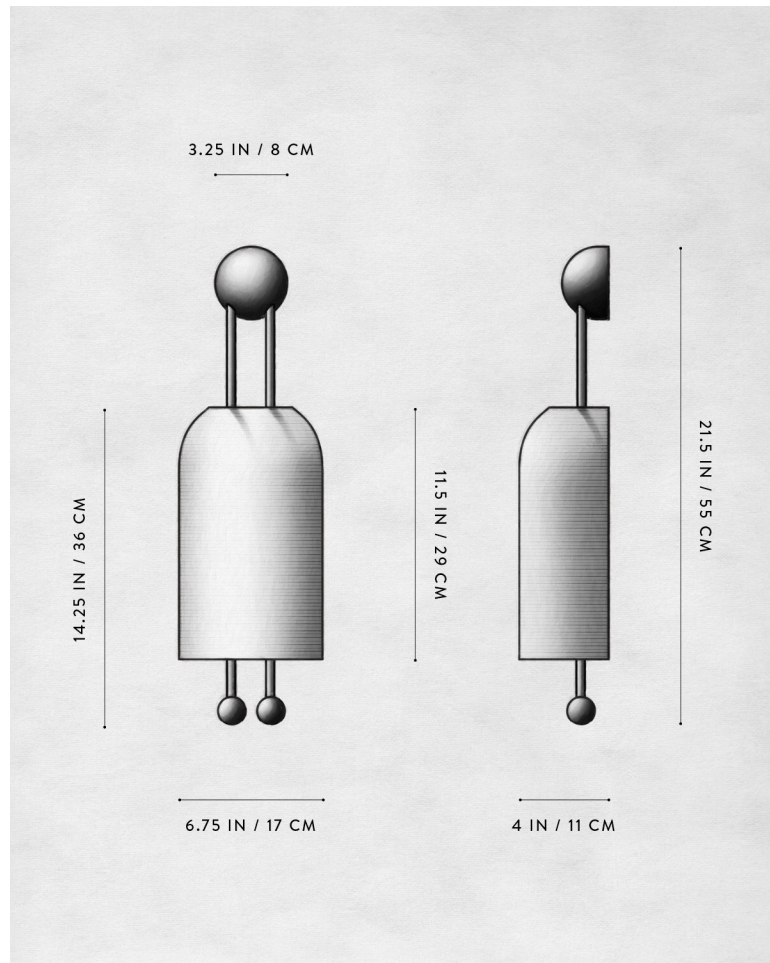


AGED BRASS / BLACKENED BRASS



AGED BRASS / BLACKENED BRASS

A P P A R A T U S



DIMENSIONS

WEIGHT

PRICE

VOLTAGE

LAMPING

BULB INCLUDED

BULB LIFE

DEPOSIT

BALANCE

LEAD TIME

LANTERN : SCONCE

21.5 H, 6.75 W, 4 D IN

55 H, 17 W, 11 D CM

APROX. 5 LBS / 2 KG

FROM \$3900

120-240

UL / CE

MAX 40W

5W DIMMABLE LED BULB

300 LUMENS

2500K

120V : E12 GLOBE SM : MATTE WHITE BRT

240V : E14 GLOBE SM : MATTE WHITE BRT

30,000 HOURS

50% UPON ORDER

PRIOR TO SHIPPING

PLEASE REFER TO WEBSITE

FINISHED AND ASSEMBLED BY HAND IN NY
DOMESTIC AND IMPORTED COMPONENTS

A P P A R A T U S



AGED BRASS



OIL-RUBBED BRONZE



BLACKENED BRASS



TARNISHED SILVER

METAL

LANTERN : SCONCE

AGED BRASS [WAXED]

OIL-RUBBED BRONZE [WAXED]

BLACKENED BRASS [WAXED]

TARNISHED SILVER [LACQUERED] ADD 35%