

# A P P A R A T U S



AGED BRASS

## LANTERN : 2 PENDANT

### REFERENCE

FRITZ LANG'S METROPOLIS  
CHÖCHIN  
WIENER WERKSTATTE

### COMPOSITION

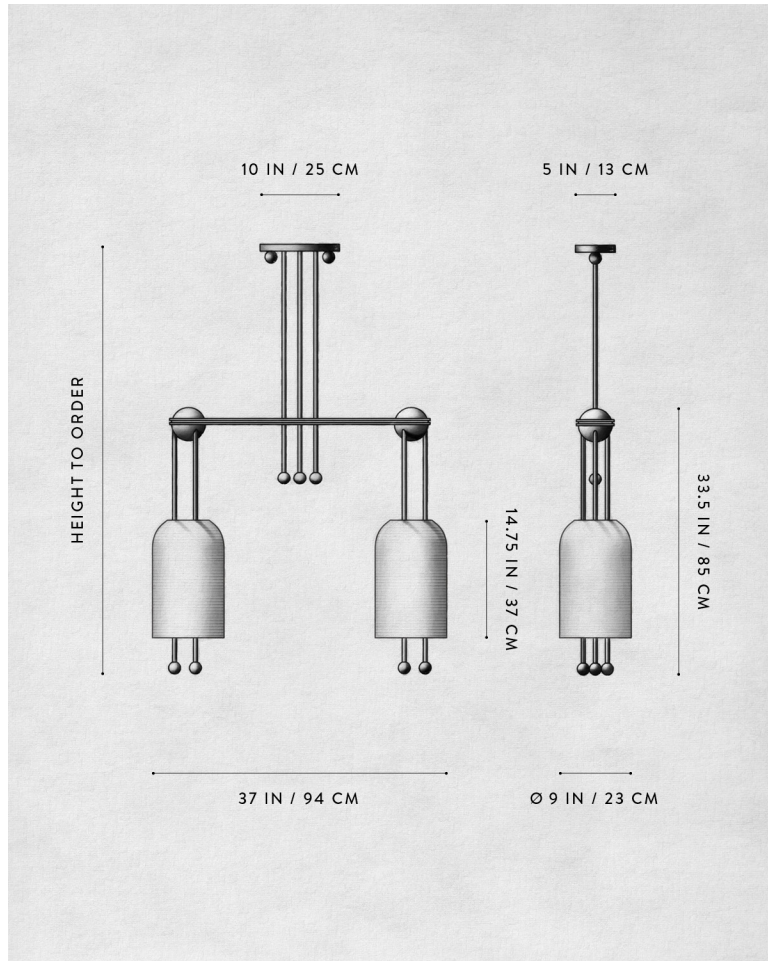
SLIP-CAST, FLUTED PORCELAIN SHADE  
BRASS ARMATURE

A P P A R A T U S



AGED BRASS / BLACKENED BRASS

# A P P A R A T U S



LANTERN : 2 PENDANT

## DIMENSIONS

37 W, 9 D IN  
94 W, 23 D CM

## WEIGHT

HEIGHT TO ORDER  
APPROX. 75 LBS / 35 KG

## PRICE

FROM \$17000

## MINIMUM HEIGHT

44 IN

## INCLUDES

85 IN

## ADD HEIGHT

\$30 / IN

## VOLTAGE

120-240

## LAMPING

UL / CE

## BULB INCLUDED

MAX 40W

6 X 5W DIMMABLE LED BULB

300 LUMENS EACH

2500K

120V : E12 GLOBE SM : MATTE WHITE BRT

240V : E14 GLOBE SM : MATTE WHITE BRT

## BULB LIFE

30,000 HOURS

## DEPOSIT

50% UPON ORDER

## BALANCE

DUE PRIOR TO SHIPPING

## LEAD TIME

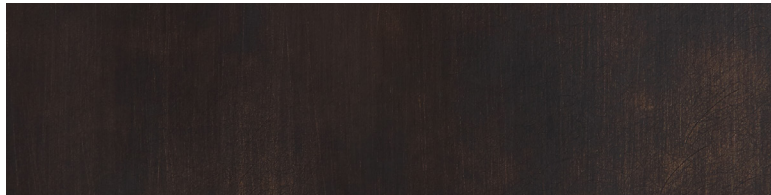
PLEASE REFER TO WEBSITE

FINISHED AND ASSEMBLED BY HAND IN NY  
DOMESTIC AND IMPORTED COMPONENTS

# A P P A R A T U S



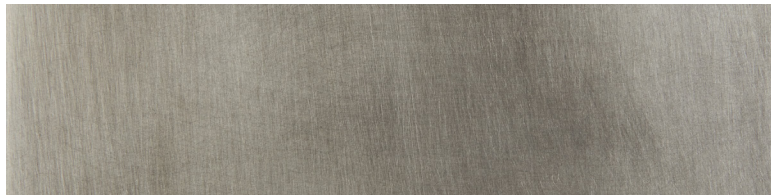
AGED BRASS



OIL-RUBBED BRONZE



BLACKENED BRASS



TARNISHED SILVER

METAL

LANTERN : 2 PENDANT

AGED BRASS [WAXED]

OIL-RUBBED BRONZE [WAXED]

BLACKENED BRASS [WAXED]

TARNISHED SILVER [LACQUERED] ADD 35%