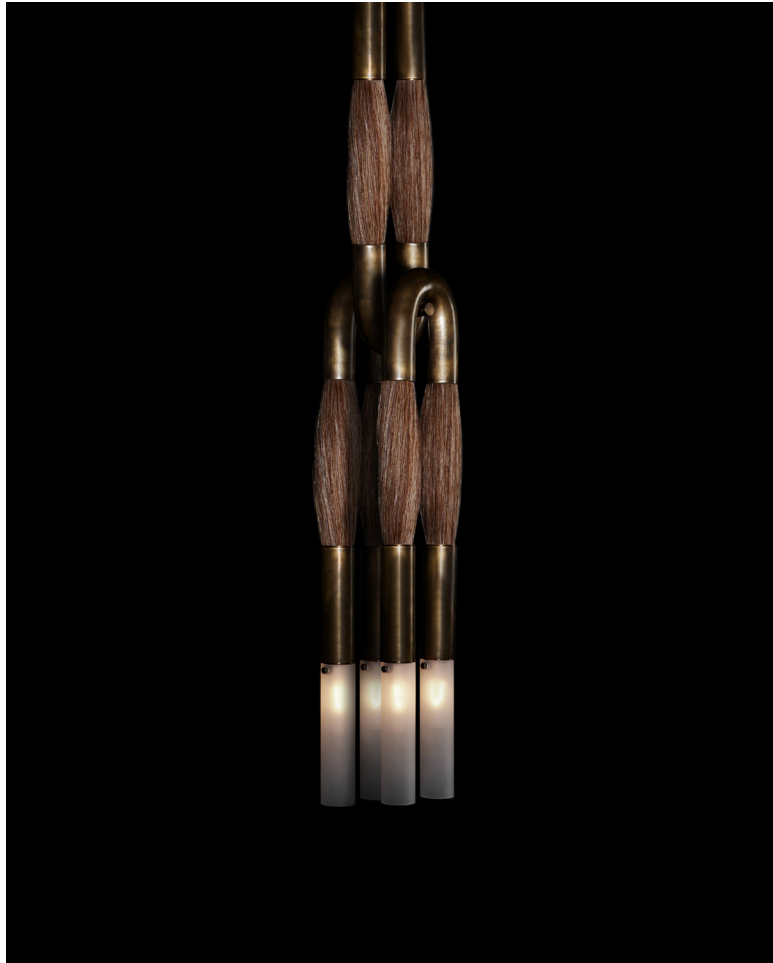


A P P A R A T U S



OIL-RUBBED BRONZE / FLAXEN HORSEHAIR

HORSEHAIR : PENDANT

REFERENCE

THE SENSUAL VERSUS THE MACHINE MADE
HORSES BY STEVEN KLEIN
RIDING TACK

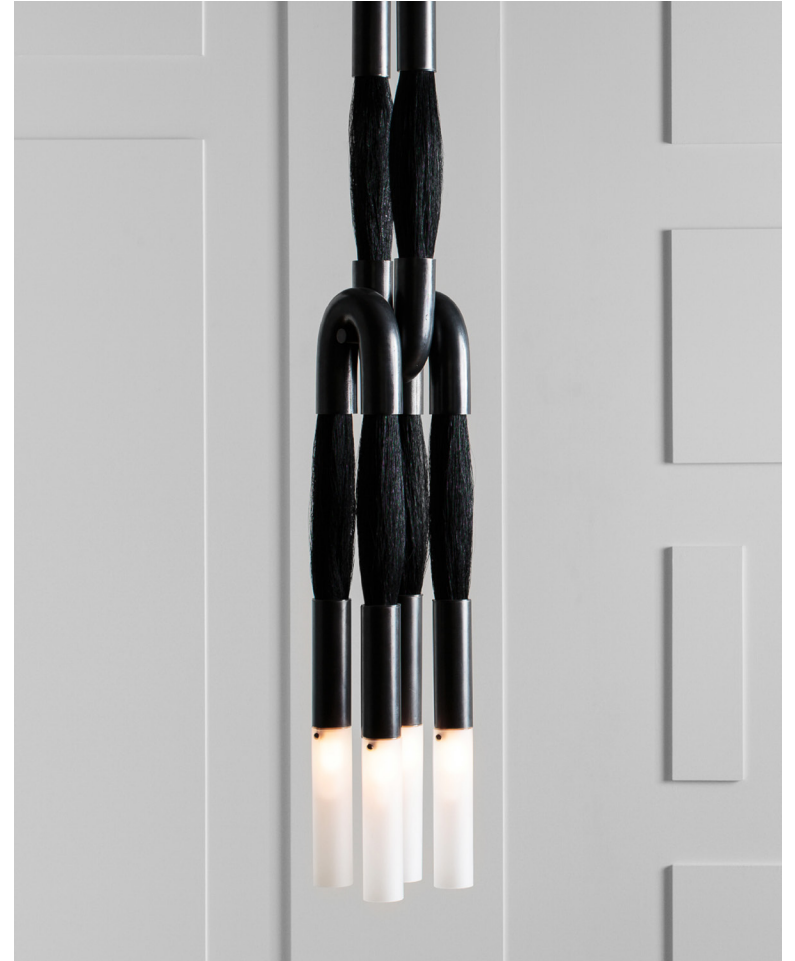
COMPOSITION

WEFTS OF HORSEHAIR IMPLY STRUCTURAL FUNCTION
BRASS FORM CAST TO APPEAR DRAPED OVER A PEG

A P P A R A T U S

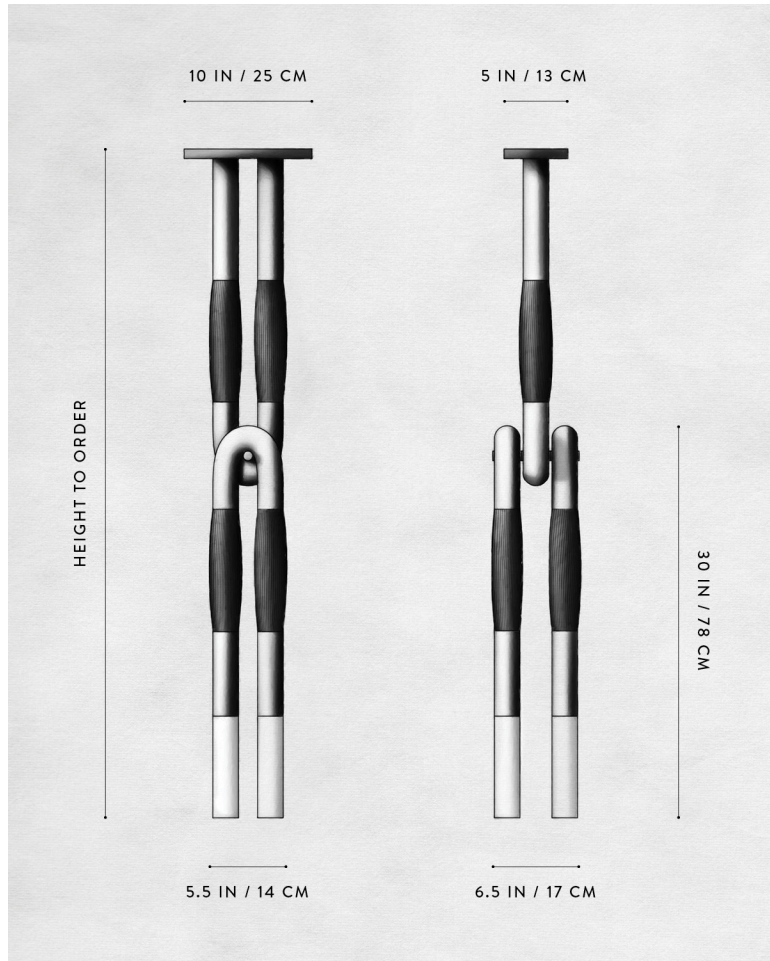


BLACKENED BRASS / JET BLACK HORSEHAIR



BLACKENED BRASS / JET BLACK HORSEHAIR

A P P A R A T U S



HORSEHAIR : PENDANT

DIMENSIONS	5.5 W, 6.5 D IN 14 W, 17 D CM HEIGHT TO ORDER
WEIGHT	APPROX. 25 LBS / 12 KG
PRICE	FROM \$16000 PALOMINO OR JET BLACK FROM \$18000 FLAXEN - LIMITED EDITION
MINIMUM HEIGHT	46 IN CUSTOM OPTIONS AVAILABLE FOR HEIGHT OVER 114 IN
INCLUDES ADD HEIGHT	85 IN \$30 / IN
VOLTAGE	120-240 UL / CE
LAMPING BULB INCLUDED	MAX 25W 4 X 3W DIMMABLE LED BULB 200 LUMENS EACH 2500K 120V : E12 TUBE SM : CLEAR 240V : E14 TUBE SM : CLEAR
BULB LIFE	30,000 HOURS
DEPOSIT BALANCE LEAD TIME	50% UPON ORDER DUE PRIOR TO SHIPPING PLEASE REFER TO WEBSITE

FINISHED AND ASSEMBLED BY HAND IN NY
DOMESTIC AND IMPORTED COMPONENTS

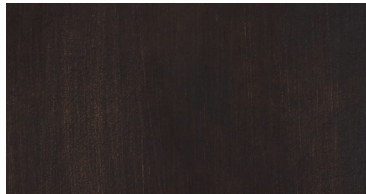
A P P A R A T U S



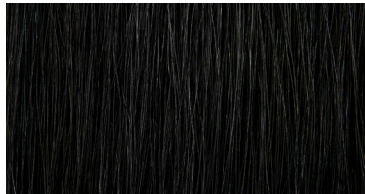
AGED BRASS



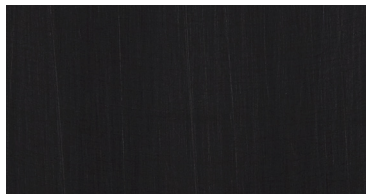
HORSEHAIR - PALOMINO



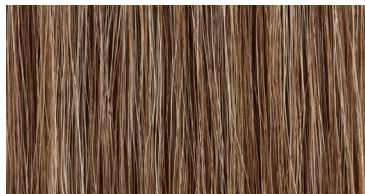
OIL-RUBBED BRONZE



HORSEHAIR - JET BLACK



BLACKENED BRASS



HORSEHAIR - FLAXEN



TARNISHED SILVER

METAL

HORSEHAIR

HORSEHAIR : PENDANT

AGED BRASS [WAXED]
OIL-RUBBED BRONZE [WAXED]
BLACKENED BRASS [WAXED]
TARNISHED SILVER [LACQUERED] ADD 35%

PALOMINO
JET BLACK
FLAXEN