

# A P P A R A T U S



AGED BRASS / FLAXEN HORSEHAIR

## HORSEHAIR : 1 SCONCE

### REFERENCE

THE SENSUAL VERSUS THE MACHINE MADE  
HORSES BY STEVEN KLEIN  
RIDING TACK

### COMPOSITION

WEFTS OF HORSEHAIR IMPLY STRUCTURAL FUNCTION  
BRASS FORM CAST TO APPEAR DRAPED OVER A PEG

A P P A R A T U S



AGED BRASS / FLAXEN HORSEHAIR



AGED BRASS

A P P A R A T U S

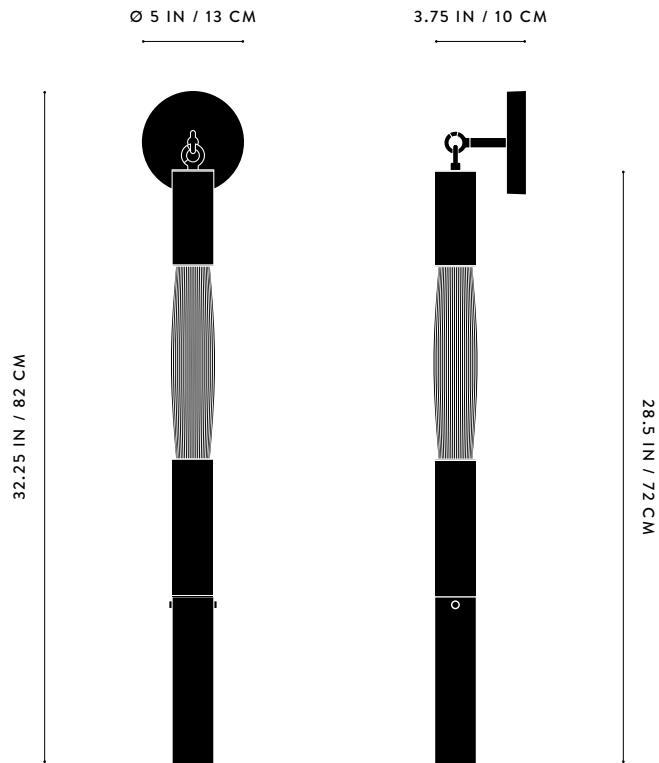


AGED BRASS / SILVER HORSEHAIR



AGED BRASS

# A P P A R A T U S



## DIMENSIONS

HORSEHAIR : 1 SCONCE

32.25 H, 5 W, 3.75 D IN

82 H, 13 W, 10 D CM

APPROX. 6 LBS / 3 KG

## WEIGHT

## PRICE

FROM \$3800 PALOMINO OR JET BLACK

FROM \$4600 FLAXEN OR SILVER

## VOLTAGE

120-240

UL / CE

## LAMPING

MAX 25W

## BULB INCLUDED

3W DIMMABLE LED BULB

180 LUMENS

2200K

120V : E12 TOTEM I : TINTED

240V : E14 TOTEM I : TINTED

## BULB LIFE

30,000 HOURS

## DEPOSIT

50% UPON ORDER

## BALANCE

PRIOR TO SHIPPING

## LEAD TIME

PLEASE REFER TO WEBSITE

FINISHED AND ASSEMBLED BY HAND IN NY

DOMESTIC AND IMPORTED COMPONENTS

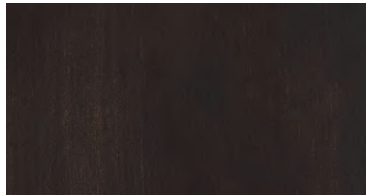
# A P P A R A T U S



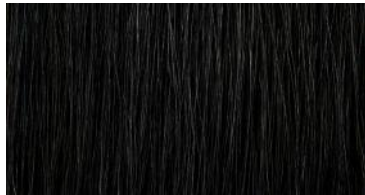
AGED BRASS



HORSEHAIR - PALOMINO



OIL-RUBBED BRONZE



HORSEHAIR - JET BLACK



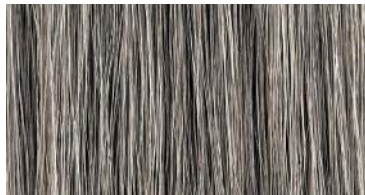
BLACKENED BRASS



HORSEHAIR - FLAXEN



TARNISHED SILVER



HORSEHAIR - SILVER

METAL

HORSEHAIR

HORSEHAIR

AGED BRASS [WAXED]  
OIL-RUBBED BRONZE [WAXED]  
BLACKENED BRASS [WAXED]  
TARNISHED SILVER [LACQUERED] ADD 35%

PALOMINO  
JET BLACK  
FLAXEN  
SILVER