

A P P A R A T U S



BLACKENED BRASS / BLACK LEATHER

CYLINDER : READING SCONCE

REFERENCE

PROPORTION VERSUS UTILITY
WALTER DE MARIA

COMPOSITION

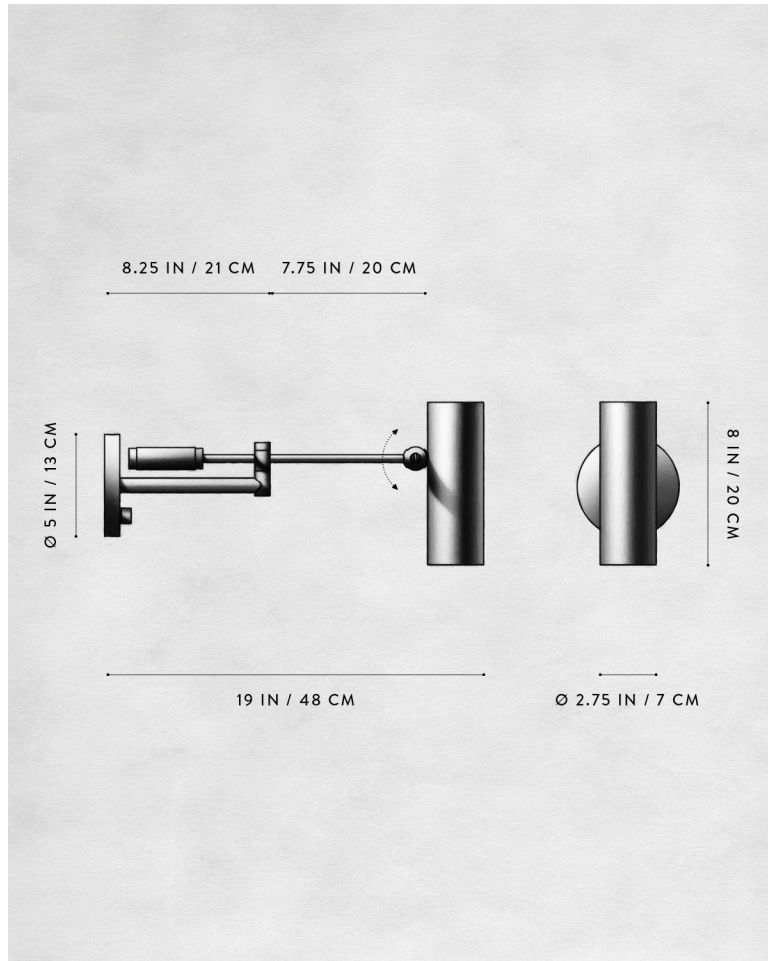
FUNCTIONAL, DIRECTIONAL LIGHTING
MECHANICAL JOINT
PRIMARY OR SECONDARY LIGHT SOURCE

A P P A R A T U S



AGED BRASS

A P P A R A T U S



CYLINDER : READING SCONCE

DIMENSIONS

8 H, 5 W, 19 D IN

20 H, 13 W, 48 D CM

WEIGHT

APPROX. 5 LBS / 2 KG

PRICE

FROM \$2250

FROM \$2450 WITH EXTERNAL MOUNT KIT

VOLTAGE

120-240

UL / CE

LAMPING

MAX 25W

BULB INCLUDED

DIMMABLE LED BULB

2200K-2700K WARM DIM

500 LUMENS

120V : PAR20 BULB, 5.5W

240V : PAR20 BULB, 7W

BULB LIFE

30,000 HOURS

DEPOSIT

50% UPON ORDER

BALANCE

PRIOR TO SHIPPING

LEAD TIME

PLEASE REFER TO WEBSITE

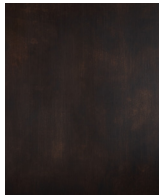
FINISHED AND ASSEMBLED BY HAND IN NY

DOMESTIC AND IMPORTED COMPONENTS

A P P A R A T U S



AGED BRASS



OIL-RUBBED BRONZE



BLACKENED BRASS



TARNISHED SILVER



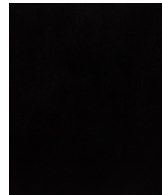
LEATHER - CANE



LEATHER - SADDLE



LEATHER - TAUPE



LEATHER - BLACK



SUEDE - ICE



SUEDE - PEWTER



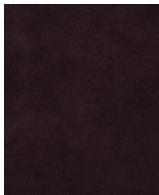
SUEDE - BRONZE



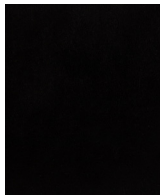
SUEDE - SEPIA



SUEDE - JUNIPER



SUEDE - PLUM



SUEDE - BLACK

METAL

LEATHER

SUEDE

CYLINDER : READING SCONCE

AGED BRASS [WAXED]
 OIL-RUBBED BRONZE [WAXED]
 BLACKENED BRASS [WAXED]
 TARNISHED SILVER [LACQUERED] ADD 35%

CANE
 SADDLE
 TAUPE
 BLACK

ICE
 PEWTER
 BRONZE
 SEPIA
 JUNIPER
 PLUM
 BLACK