

A P P A R A T U S



TWO-TONE

CIRCUIT : 7

REFERENCE

RHYTHM AND SYNCOPATION
HALSTON
AFTERGLOW

COMPOSITION

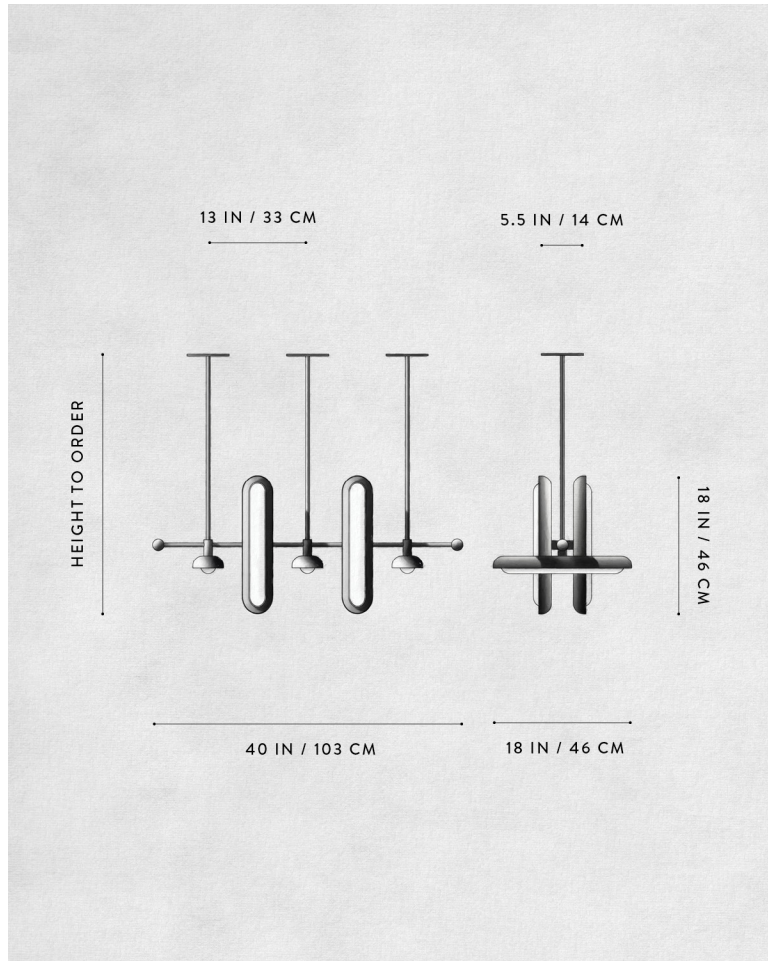
GLOWING GLASS CAPSULE
BRASS SHADE AND ARMATURE

A P P A R A T U S



TWO-TONE

A P P A R A T U S



DIMENSIONS

CIRCUIT: 7

40 W, 18 D IN
103 W, 46 D CM
HEIGHT TO ORDER
APPROX. 55 LBS / 25 KG

WEIGHT

PRICE

FROM \$14000
FROM \$16800 FOR TWO-TONE SHADES
TWO-TONE IS AGED BRASS SHADE INTERIOR
WITH BLACKENED BRASS SHADE EXTERIOR

MINIMUM HEIGHT

24 IN

INCLUDES

60 IN

ADD HEIGHT

\$30 / IN

VOLTAGE

120-240
UL / CE

LAMPING

7 X 16W DIMMABLE LED
1700 LUMENS EACH
2700K

DRIVER LIFE

50,000 HOURS

DEPOSIT

50% UPON ORDER

BALANCE

PRIOR TO SHIPPING

LEAD TIME

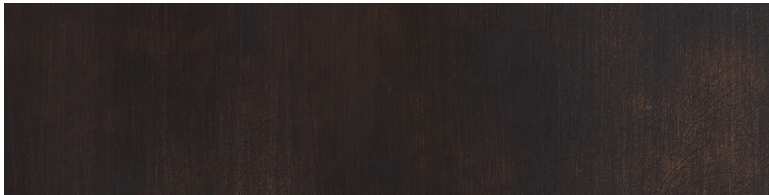
PLEASE REFER TO WEBSITE

FINISHED AND ASSEMBLED BY HAND IN NY
DOMESTIC AND IMPORTED COMPONENTS

A P P A R A T U S



AGED BRASS



OIL-RUBBED BRONZE



BLACKENED BRASS



TARNISHED SILVER

METAL

CIRCUIT : 7

AGED BRASS [WAXED]

OIL-RUBBED BRONZE [WAXED]

BLACKENED BRASS [WAXED]

TARNISHED SILVER [LACQUERED] ADD 35%